

1998 GULFSTREAM GIVSP

SERIAL NUMBER: 1349



File Photo

Jetcraft Corporation

North America | Latin America | Europe | Africa | Middle East | Russia | Asia-Pacific
(HQ)Tel. +1 919 941 8400 | Fax +1 919 941 8406 | www.jetcraft.com | info@jetcraft.com



1998 GULFSTREAM IVSP *SERIAL NUMBER: 1349*

AIRFRAME

6,248.9 Hours 2,829 Cycles (As of February 2015)
MSG3 Maintenance Schedule
CMP Maintenance Tracking
Recent GTCP 36-150 APU Upgrad
To be Delivered w/ Fresh 96 Month Inspection and Paint

ENGINES

| Description | <u>Left & Right</u> | |
|-----------------------|---|-----------------------|
| | Rolls-Royce TAY611-8 | |
| Total Time Since New | 6,131.3 Hours | 6,131.3 Hours |
| Cycles Since New | 2,788 Cycles | 2,788 Cycles |
| Time to Overhaul | 1,594 Hrs. or 10/2017 | 1,594 Hrs. or 10/2017 |
| Engine Serial Numbers | 16815 | 16816 |
| TBO | 8,000 Hours / 20 Years (4,000 Hours / 10 Years Midlife) | |
| Thrust | 13,850 lbs. | |

APU

| | |
|-------------------------|-----------------------|
| Description | Honeywell GTCP 36-150 |
| Total Time Since New | 3,465 Hours |
| Time Since -150 Upgrade | 234 Hours |
| Serial Number | P-757C |

AVIONICS

This Gulfstream IVSP features the Honeywell SPZ-8000 6-Tube avionics suite and is configured as follows:

| | |
|------------------|---|
| Autopilot: | Honeywell SPZ-8400 |
| Communication: | Triple Collins VHF-422C |
| Navigation: | Dual Collins VIR-432 |
| DME: | Dual Collins DME-442 |
| Transponder: | Dual TDR-94D |
| Color Radar: | Honeywell Primus 880 w/Turbulence Detection |
| Radio Altimeter: | Dual Collins AA-300 |
| GPWS: | Mark IV Enhanced |
| FMS: | Dual Honeywell NZ-2000 w/Dual GPS |
| GPS: | GNS-XLS w/AFIS Interface |
| IRS: | Triple Honeywell Laseref II |
| HF: | Dual Collins HF-9000 w/Selcal |
| TCAS: | Honeywell TCAS II Change 7 |
| CVR: | Single Fairchild/Loral A-100 |
| FDR: | Single Fairchild/Loral F-1000 (57 Parameters) |
| ELT: | Single Artex C406-N |

ADDITIONAL HIGHLIGHTS/OPTIONS

- Magnastar C-2000 - Digital Radio Telephone with Fax Capability
 - Phone Handset at Aft Club
 - Phone Drop in Handset at VIP Seat
 - Cockpit Handset
- Allied/Signal AFIS with SATCOM Link
- Cockpit AFIS Printer
- Cabin Printer/Fax Machine
- Dual Honeywell Air Data Systems
- Ground Service Bus
- Accordion Window Shades
- Forward Crew Jump Seat
- Microwave & Large Convection Oven
- Two (2) Coffee Makers in Galley
- 115V/60Hz Outlets Located throughout the Cabin
- Standby Attitude Indicator
- Pulse Light Mod

Specifications and/or descriptions are provided as introductory information only and do not constitute representations or warranties. Verification of specifications remain the sole responsibility of purchaser. Aircraft is subject to prior sale, lease, and/or removal from the market without prior notice.

Jetcraft Corporation

North America | Latin America | Europe | Africa | Middle East | Russia | Asia-Pacific
(HQ)Tel. +1 919 941 8400 | Fax +1 919 941 8406 | www.jetcraft.com | info@jetcraft.com



1998 GULFSTREAM IVSP SERIAL NUMBER: 1349

EXTERIOR

To be Delivered with Fresh Overall White Paint.

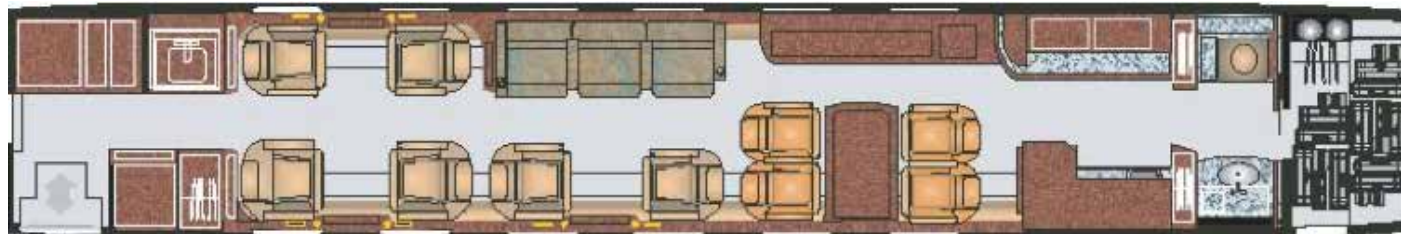
INTERIOR

This Gulfstream IVSP features comfortable seating for thirteen (13) passengers:

- Forward LH Lavatory
- Forward RH Storage Cabinet
- Forward Cabin Four (4) Place Club with Fold Out Tables
- Mid Cabin Two (2) Place Club with Fold Out Table Opposite a Three (3) Place Divan
- Aft Cabin Four (4) Place Conference Grouping with Hi-Lo Table Opposite a Low Credenza
- Aft Full Service Galley with Convection and Microwave Ovens, Ice Chest, Hot Cup, Dual Krups Coffee Maker, and Ample Storage for Glassware, China, Additional Supplies, etc.
- Aft Lavatory and Vanity with Storage and Aft Baggage Access
- Fireblocked
- Woodwork is Medium Birdseye Maple
- Hardware is Polished Gold-Plating

ENTERTAINMENT

- Airshow 400
- Dual DVD Players
- 10 Disc CD Player with Cassette & Tuner
- Baker Sound System
- Six (6) Rosen 5.6" Cabin Swing Out Monitors
- One (1) Large Wall Mounted LCD Monitor above Aft Cabin Credenza
- One (1) Pop Out LCD Monitor in Divan Seat Arm Rest



Floorplan

Specifications and/or descriptions are provided as introductory information only and do not constitute representations or warranties. Verification of specifications remain the sole responsibility of purchaser. Aircraft is subject to prior sale, lease, and/or removal from the market without prior notice.

Jetcraft Corporation

North America | Latin America | Europe | Africa | Middle East | Russia | Asia-Pacific
(HQ)Tel. +1 919 941 8400 | Fax +1 919 941 8406 | www.jetcraft.com | info@jetcraft.com



1998 GULFSTREAM IVSP *SERIAL NUMBER: 1349*

Forward Cabin Facing Aft



Specifications and/or descriptions are provided as introductory information only and do not constitute representations or warranties. Verification of specifications remain the sole responsibility of purchaser. Aircraft is subject to prior sale, lease, and/or removal from the market without prior notice.

Jetcraft Corporation

North America | Latin America | Europe | Africa | Middle East | Russia | Asia-Pacific
(HQ)Tel. +1 919 941 8400 | Fax +1 919 941 8406 | www.jetcraft.com | info@jetcraft.com



1998 GULFSTREAM IVSP *SERIAL NUMBER: 1349*

Mid Cabin Facing Aft



Specifications and/or descriptions are provided as introductory information only and do not constitute representations or warranties. Verification of specifications remain the sole responsibility of purchaser. Aircraft is subject to prior sale, lease, and/or removal from the market without prior notice.

Jetcraft Corporation

North America | Latin America | Europe | Africa | Middle East | Russia | Asia-Pacific
(HQ)Tel. +1 919 941 8400 | Fax +1 919 941 8406 | www.jetcraft.com | info@jetcraft.com



1998 GULFSTREAM IVSP *SERIAL NUMBER: 1349*

Aft Cabin Facing Aft



Specifications and/or descriptions are provided as introductory information only and do not constitute representations or warranties. Verification of specifications remain the sole responsibility of purchaser. Aircraft is subject to prior sale, lease, and/or removal from the market without prior notice.

Jetcraft Corporation

North America | Latin America | Europe | Africa | Middle East | Russia | Asia-Pacific
(HQ)Tel. +1 919 941 8400 | Fax +1 919 941 8406 | www.jetcraft.com | info@jetcraft.com



1998 GULFSTREAM IVSP *SERIAL NUMBER: 1349*

Forward Cabin



Seat Detail



Seat Open



Specifications and/or descriptions are provided as introductory information only and do not constitute representations or warranties. Verification of specifications remain the sole responsibility of purchaser. Aircraft is subject to prior sale, lease, and/or removal from the market without prior notice.

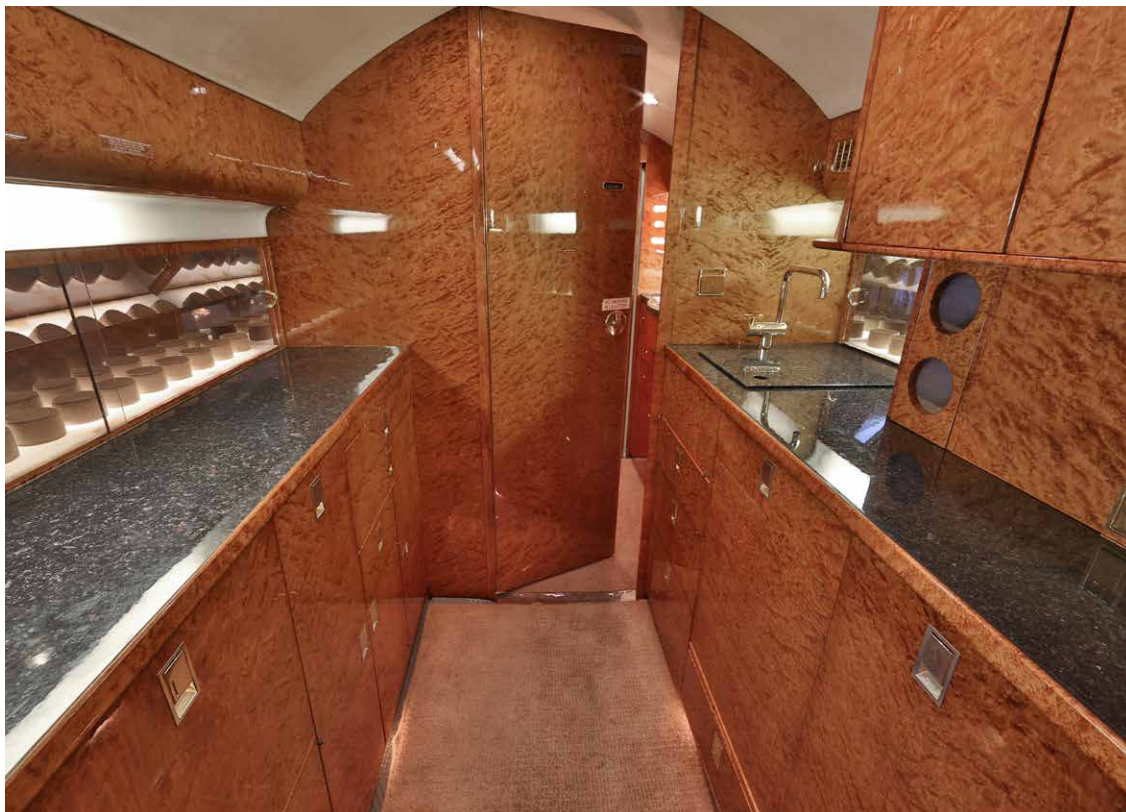
Jetcraft Corporation

North America | Latin America | Europe | Africa | Middle East | Russia | Asia-Pacific
(HQ)Tel. +1 919 941 8400 | Fax +1 919 941 8406 | www.jetcraft.com | info@jetcraft.com



1998 GULFSTREAM IVSP *SERIAL NUMBER: 1349*

Aft Galley



Aft Galley Detail



Aft Galley Open

Specifications and/or descriptions are provided as introductory information only and do not constitute representations or warranties. Verification of specifications remain the sole responsibility of purchaser. Aircraft is subject to prior sale, lease, and/or removal from the market without prior notice.

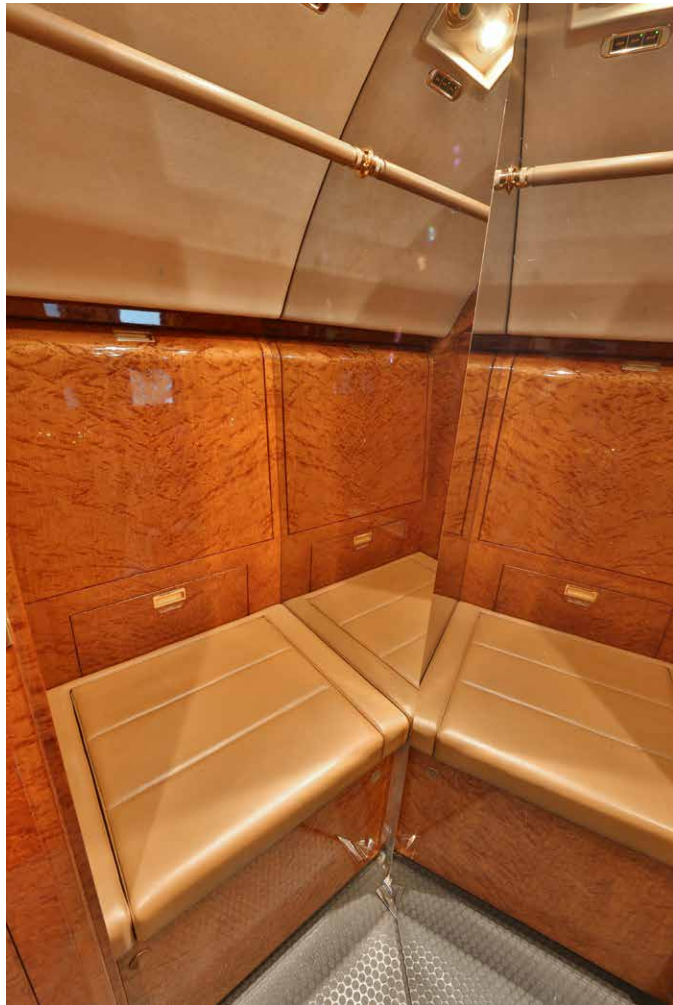
Jetcraft Corporation

North America | Latin America | Europe | Africa | Middle East | Russia | Asia-Pacific
(HQ)Tel. +1 919 941 8400 | Fax +1 919 941 8406 | www.jetcraft.com | info@jetcraft.com

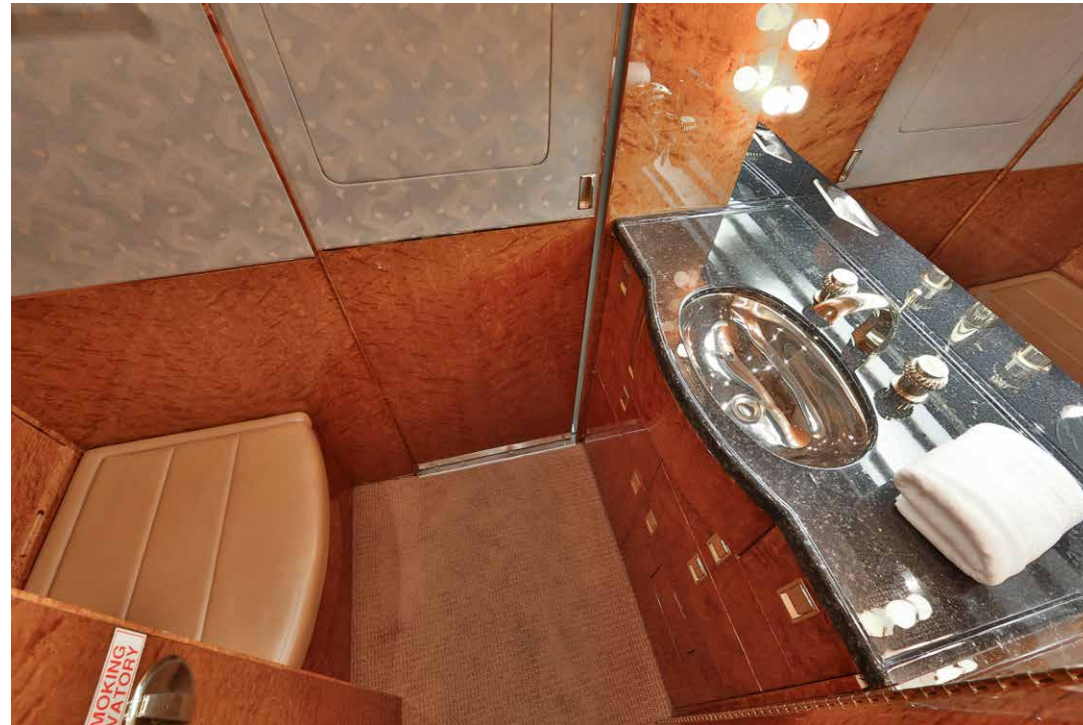


1998 GULFSTREAM IVSP SERIAL NUMBER: 1349

Forward Lavatory



Aft Lavatory



Specifications and/or descriptions are provided as introductory information only and do not constitute representations or warranties. Verification of specifications remain the sole responsibility of purchaser. Aircraft is subject to prior sale, lease, and/or removal from the market without prior notice.

Jetcraft Corporation

North America | Latin America | Europe | Africa | Middle East | Russia | Asia-Pacific
(HQ)Tel. +1 919 941 8400 | Fax +1 919 941 8406 | www.jetcraft.com | info@jetcraft.com



1998 GULFSTREAM IVSP SERIAL NUMBER: 1349

Divan Monitor Detail



Side Cabinet



Seat Control Detail



Side Cabinet Open

Specifications and/or descriptions are provided as introductory information only and do not constitute representations or warranties. Verification of specifications remain the sole responsibility of purchaser. Aircraft is subject to prior sale, lease, and/or removal from the market without prior notice.

Jetcraft Corporation

North America | Latin America | Europe | Africa | Middle East | Russia | Asia-Pacific
(HQ)Tel. +1 919 941 8400 | Fax +1 919 941 8406 | www.jetcraft.com | info@jetcraft.com



1998 GULFSTREAM IVSP *SERIAL NUMBER: 1349*

Avionics Suite



Specifications and/or descriptions are provided as introductory information only and do not constitute representations or warranties. Verification of specifications remain the sole responsibility of purchaser. Aircraft is subject to prior sale, lease, and/or removal from the market without prior notice.

Jetcraft Corporation

North America | Latin America | Europe | Africa | Middle East | Russia | Asia-Pacific
(HQ)Tel. +1 919 941 8400 | Fax +1 919 941 8406 | www.jetcraft.com | info@jetcraft.com



AIRCRAFT ACQUISITIONS, SALES AND TRADES

AIRBUS BOEING BOMBARDIER CESSNA DASSAULT EMBRAER GULFSTREAM HAWKER

Whether you're looking to buy an aircraft or sell one, Jetcraft will put more than five decades of experience to work making it happen. Flawlessly. Because when you turn to us, you're tapping into an international team of specialists that consistently transform complex challenges into solutions. We build our entire approach around you, leveraging our market expertise and extensive industry partnerships to guarantee you'll always get the best advice – and the best deals. So give us a call. And leave doubt on the tarmac.

Jetcraft Corporation

North America | Latin America | Europe | Africa | Middle East | Russia | Asia-Pacific
(HQ) Tel. +1 919 941 8400 | Fax +1 919 941 8406 | www.jetcraft.com | info@jetcraft.com

