

# 2007 BOMBARDIER CHALLENGER 300

*SERIAL NUMBER: 20141*



**Jetcraft Corporation**

North America | Latin America | Europe | Africa | Middle East | Russia | Asia-Pacific  
(HQ)Tel. +1 919 941 8400 | Fax +1 919 941 8406 | [www.jetcraft.com](http://www.jetcraft.com) | [info@jetcraft.com](mailto:info@jetcraft.com)



# 2007 BOMBARDIER CHALLENGER 300

SERIAL NUMBER: 20141

## HIGHLIGHTS

96 Month Inspection Complete April 2015

Privately flown Aircraft with Very Low Time

Extensive Exterior and Interior refurbishment at Jet Aviation, Basel July 2010

## AIRFRAME

|                          |   |
|--------------------------|---|
| Total Time Since New     | 1,284 Hours (As of 7 Feb 2015)                              |
| Total Landings Since New | 1,086 Landings  |
| Entry into service date  | May 2007  |
| Home Base                | Basel, Switzerland (Currently Hangared in Montreal, Canada) |
| Program Coverage         | <b>None</b>   |
| Certification            | Jar Ops 1   |

## ENGINES

|                        | Left Engine       | Right Engine |
|------------------------|-------------------|--------------|
| Description            | Honeywell HTF7000 |              |
| Serial Number(s)       | 118403            | 118410       |
| Total Hours Since New  | 1,284 Hours       | 1,284 Hours  |
| Total Cycles Since New | 1,086 Cycles      | 1,086 Cycles |
| HSI Due/Overhaul Due   | On Condition      |              |
| Program Coverage       | <b>None</b>       |              |

## APU

|                          |                    |
|--------------------------|--------------------|
| Description              | Honeywell 36-150BD |
| Serial Number            | P-251              |
| APU Total Time Since New | 1,505 Hours        |
| HSI Due/Overhaul Due     | On Condition       |
| Program Coverage         | <b>None</b>        |

## MAJOR INSPECTION STATUS

| Inspection     | Last Performed | Next Due      |
|----------------|----------------|---------------|
| 12 Month Check | 15 April 2015  | 15 April 2016 |
| 24 Month Check | 15 April 2015  | 15 April 2017 |
| 48 Month Check | 15 April 2015  | 15 April 2019 |
| 96 Month Check | 15 April 2015  | 15 April 2023 |
| 400hr Check    | 04 April 2012  | 1,349hrs      |

Specifications and/or descriptions are provided as introductory information only and do not constitute representations or warranties. Verification of specifications remain the sole responsibility of purchaser. Aircraft is subject to prior sale, lease, and/or removal from the market without prior notice.

### Jetcraft Corporation

North America | Latin America | Europe | Africa | Middle East | Russia | Asia-Pacific  
(HQ)Tel. +1 919 941 8400 | Fax +1 919 941 8406 | www.jetcraft.com | info@jetcraft.com



# 2007 BOMBARDIER CHALLENGER 300

SERIAL NUMBER: 20141

## NAVIGATION & COMPLIANCE

RVSM, MNPS  
Jar Ops 1  
Swiss Registered

## AVIONICS

The Challenger 300 is equipped with an integrated Rockwell Collins Pro Line 21 avionics suite. A general summary of this aircraft's avionics suite is as follows (Items in bold indicate optional/added equipment):

| Type of Unit  | Quantity      | Description                           |
|---|---------------|---------------------------------------|
| <b>EFIS</b> (Electronic Flight Instrument System)       | <b>4-Tube</b> | Collins Pro Line 21                   |
| <b>ESIS</b> (Electronic Standby Instrument System)      | <b>Dual</b>   | Collins Pro Line 21                   |
| <b>FMS</b> (Flight Management System)                   | <b>Dual</b>   | FMC-5000 V.6 with V speeds            |
| <b>GPS</b> (Global Positioning System)                  | <b>Dual</b>   | GPS-4000                              |
| <b>ADC</b> (Air Data Computer)                          | <b>Single</b> | ADC-3000                              |
| <b>DME</b> (Distance Measuring Equipment)               | <b>Dual</b>   | DME-4000                              |
| <b>ADF</b> (Automatic Direction Finder)                 | <b>Dual</b>   | Collins Pro Line 21                   |
| <b>EICAS</b> (Engine Indication/Crew Alerting System)   | <b>Single</b> | Collins Pro Line 21 AFD-5220          |
| <b>AUDIO</b>  |               |                                       |
| <b>VHF COM</b> (Very High Freq. Communication)          | <b>Dual</b>   | VHF-4000                              |
| <b>HF COM</b> (High Freq. Communications)               | <b>Dual</b>   | Collins HF-9000 SELCAL                |
| <b>SATCOM</b> (Satellite Communications)                | <b>Single</b> | Iridium ICS-200                       |
| <b>RADAR (Enhanced Weather)</b>                         |               |                                       |
| <b>RADAR ALT</b> (Radar Altimeter)                      | <b>Dual</b>   | Honeywell ALT-4000                    |
| <b>XPNDR</b> (Transponder)                              | <b>Dual</b>   | Honeywell TDR-94D mode S Transponders |
| <b>EGPWS</b> (Enhanced Ground Proximity Warning System) | <b>Single</b> | MK VIII EGPWS with Windshear          |
| <b>TCAS</b> (Traffic Collision Avoidance System)        | <b>Single</b> | Honeywell TTR-4000 with Change 7      |
| <b>CVR</b> (Cockpit Voice Recorder)                     | <b>Single</b> | Jar Ops 1 LE Spec                     |
| <b>FDR</b> (Flight Data Recorder)                       | <b>Single</b> | Jar Ops 1 LE Spec                     |

## CONNECTIVITY

| Type of Unit           | Description                 |
|------------------------|-----------------------------|
| SatCom                 | Iridium ICS-200             |
| Other Notable Features | Bombardier LE Specification |

Specifications and/or descriptions are provided as introductory information only and do not constitute representations or warranties. Verification of specifications remain the sole responsibility of purchaser. Aircraft is subject to prior sale, lease, and/or removal from the market without prior notice.

### Jetcraft Corporation

North America | Latin America | Europe | Africa | Middle East | Russia | Asia-Pacific  
(HQ)Tel. +1 919 941 8400 | Fax +1 919 941 8406 | www.jetcraft.com | info@jetcraft.com



# 2007 BOMBARDIER CHALLENGER 300

SERIAL NUMBER: 20141

## ENTERTAINMENT

### Type of Unit

Display/TV Monitor(s)  
Airshow System  
DVD Player(s)

### Description

Fwd & Aft Cabin Bulkhead LCD Monitors  
Airshow 4000 Flight Information System  
Combination CD/DVD/MP3 Player

## OTHER EQUIPMENT

### Type of Unit

Options  
ELT

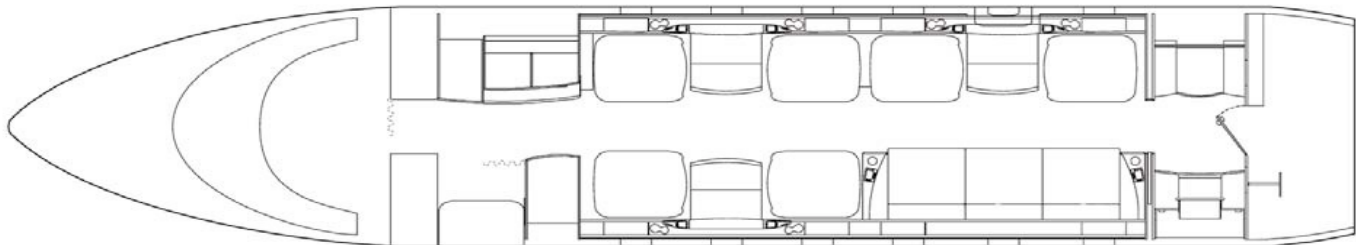
### Description

3D Flight Plan, Lower TCAS Antennae  
Artex 406Mhz ELT

## WEIGHTS

|                     |            |                                |            |
|---------------------|------------|--------------------------------|------------|
| Gross Weight (Ramp) | 39,000 lbs | Fuel Capacity                  | 14,150 lbs |
| Max Takeoff Weight  | 38,850 lbs | Empty Weight                   | 27,000 lbs |
| Max Landing Weight  | 33,750 lbs | Current Basic Operating Weight | 24,206 lbs |

## INTERIOR



|                          |  |
|--------------------------|--|
| Number of Passengers     | <b>Description</b><br>Nine (9) + Belted Lav (1)                    |
| Galley Location          | Forward  |
| Fwd Cabin Configuration  | Four (4) executive club seats with foldout tables                  |
| Aft Cabin Configuration  | 3-place 16G berthable divan opposite two (2) executive club seats  |
| Lavatory Location(s)     | Aft fully enclosed lavatory with Deluxe Baggage                    |
| Crew Rest                | Forward  |
| Jumpseat                 | No   |
| Other Notable Features   | <b>Refurbished and Painted in July 2010 by Jet Aviation, Basel</b> |
| <b>Galley Equipment:</b> | Coffee maker, High Temp Oven                                       |

*Specifications and/or descriptions are provided as introductory information only and do not constitute representations or warranties. Verification of specifications remain the sole responsibility of purchaser. Aircraft is subject to prior sale, lease, and/or removal from the market without prior notice.*

### Jetcraft Corporation

North America | Latin America | Europe | Africa | Middle East | Russia | Asia-Pacific  
(HQ)Tel. +1 919 941 8400 | Fax +1 919 941 8406 | www.jetcraft.com | info@jetcraft.com



# 2007 BOMBARDIER CHALLENGER 300

SERIAL NUMBER: 20141

## EXTERIOR

Base Paint Color(s)

Matterhorn White upper fuselage. Dark Blue lower fuselage and wings

Stripe Color(s)

Dark Blue accent stripes running from nose to tail

Last Painted Date

July 2010

Exterior - Left Profile



Exterior - Paint Stripe Detail



*Specifications and/or descriptions are provided as introductory information only and do not constitute representations or warranties. Verification of specifications remain the sole responsibility of purchaser. Aircraft is subject to prior sale, lease, and/or removal from the market without prior notice.*

### Jetcraft Corporation

North America | Latin America | Europe | Africa | Middle East | Russia | Asia-Pacific  
(HQ)Tel. +1 919 941 8400 | Fax +1 919 941 8406 | [www.jetcraft.com](http://www.jetcraft.com) | [info@jetcraft.com](mailto:info@jetcraft.com)



# 2007 BOMBARDIER CHALLENGER 300

SERIAL NUMBER: 20141

Forward Cabin Facing Aft



Aft Cabin Facing Forward



*Specifications and/or descriptions are provided as introductory information only and do not constitute representations or warranties. Verification of specifications remain the sole responsibility of purchaser. Aircraft is subject to prior sale, lease, and/or removal from the market without prior notice.*

## Jetcraft Corporation

North America | Latin America | Europe | Africa | Middle East | Russia | Asia-Pacific  
(HQ)Tel. +1 919 941 8400 | Fax +1 919 941 8406 | [www.jetcraft.com](http://www.jetcraft.com) | [info@jetcraft.com](mailto:info@jetcraft.com)



# 2007 BOMBARDIER CHALLENGER 300

SERIAL NUMBER: 20141

Aft Divan



Forward Galley



*Specifications and/or descriptions are provided as introductory information only and do not constitute representations or warranties. Verification of specifications remain the sole responsibility of purchaser. Aircraft is subject to prior sale, lease, and/or removal from the market without prior notice.*

## Jetcraft Corporation

North America | Latin America | Europe | Africa | Middle East | Russia | Asia-Pacific  
(HQ)Tel. +1 919 941 8400 | Fax +1 919 941 8406 | [www.jetcraft.com](http://www.jetcraft.com) | [info@jetcraft.com](mailto:info@jetcraft.com)



# 2007 BOMBARDIER CHALLENGER 300

SERIAL NUMBER: 20141

Forward Seat



Sidewall Detail



Forward Seating



*Specifications and/or descriptions are provided as introductory information only and do not constitute representations or warranties. Verification of specifications remain the sole responsibility of purchaser. Aircraft is subject to prior sale, lease, and/or removal from the market without prior notice.*

**Jetcraft Corporation**

North America | Latin America | Europe | Africa | Middle East | Russia | Asia-Pacific  
(HQ)Tel. +1 919 941 8400 | Fax +1 919 941 8406 | [www.jetcraft.com](http://www.jetcraft.com) | [info@jetcraft.com](mailto:info@jetcraft.com)

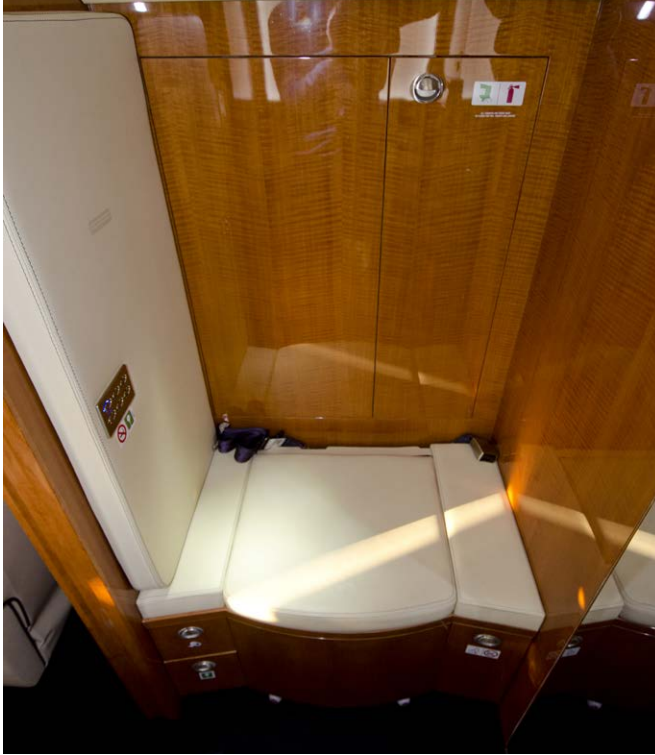




# 2007 BOMBARDIER CHALLENGER 300

SERIAL NUMBER: 20141

Lavatory



Lavatory Vanity



Lavatory Sink Detail



*Specifications and/or descriptions are provided as introductory information only and do not constitute representations or warranties. Verification of specifications remain the sole responsibility of purchaser. Aircraft is subject to prior sale, lease, and/or removal from the market without prior notice.*

## Jetcraft Corporation

North America | Latin America | Europe | Africa | Middle East | Russia | Asia-Pacific  
(HQ)Tel. +1 919 941 8400 | Fax +1 919 941 8406 | [www.jetcraft.com](http://www.jetcraft.com) | [info@jetcraft.com](mailto:info@jetcraft.com)



# 2007 BOMBARDIER CHALLENGER 300

SERIAL NUMBER: 20141

Avionics Suite



Exterior - Open Door



*Specifications and/or descriptions are provided as introductory information only and do not constitute representations or warranties. Verification of specifications remain the sole responsibility of purchaser. Aircraft is subject to prior sale, lease, and/or removal from the market without prior notice.*

## Jetcraft Corporation

North America | Latin America | Europe | Africa | Middle East | Russia | Asia-Pacific  
(HQ)Tel. +1 919 941 8400 | Fax +1 919 941 8406 | [www.jetcraft.com](http://www.jetcraft.com) | [info@jetcraft.com](mailto:info@jetcraft.com)



# AIRCRAFT ACQUISITIONS, SALES AND TRADES

AIRBUS

BOEING

BOMBARDIER

CESSNA

DASSAULT

EMBRAER

GULFSTREAM

HAWKER

Whether you're looking to buy an aircraft or sell one, Jetcraft will put more than five decades of experience to work making it happen. Flawlessly. Because when you turn to us, you're tapping into an international team of specialists that consistently transform complex challenges into solutions. We build our entire approach around you, leveraging our market expertise and extensive industry partnerships to guarantee you'll always get the best advice – and the best deals. So give us a call. And leave doubt on the tarmac.

## Jetcraft Corporation

North America | Latin America | Europe | Africa | Middle East | Russia | Asia-Pacific  
(HQ)Tel. +1 919 941 8400 | Fax +1 919 941 8406 | [www.jetcraft.com](http://www.jetcraft.com) | [info@jetcraft.com](mailto:info@jetcraft.com)

