



2010 Bombardier Challenger 605 s/N 5776



# 2010 Bombardier Challenger 605 s/N 5776

## HIGHLIGHTS

### FULLY ENROLLED ON PROGRAMS



### TRIPLE LASEREF V AND VHF COMM



### ADS-B OUT AND DATALINK



### TCAS 7.1 EQUIPPED



### 10 PASSENGER CONFIGURATION

## AIRFRAME

TOTAL TIME SINCE NEW	1,326 Hours (as of June 29, 2017)
TOTAL LANDINGS SINCE NEW	364 Landings
ENTRY INTO SERVICE DATE	February 2, 2010
HOME BASE	St. Louis, Missouri
PROGRAM COVERAGE	Bombardier Smart Parts
REGISTRATION	Cayman Islands



## ENGINES

	Left Engine	Right Engine
DESCRIPTION	General Electric CF-34-3B	
SERIAL NUMBER(S)	950733	950732
TOTAL HOURS SINCE NEW	1,341 Hours	1,341 Hours
TOTAL CYCLES SINCE NEW	375 Cycles	377 Cycles
PROGRAM COVERAGE	General Electric OnPoint	



## APU

DESCRIPTION	Honeywell GTCP36-150
SERIAL NUMBER	P-223
APU TOTAL TIME SINCE NEW	2,147 Hours
PROGRAM COVERAGE	Honeywell MSP

# 2010 Bombardier Challenger 605 s/N 5776

## AVIONICS

Type of Unit	Quantity	Description
<b>EFIS (Electronic Flight Instrument System)</b>	Four-Tube	Rockwell Collins AFD-5220E
<b>FMS (Flight Management System)</b>	Dual	Rockwell Collins FMS-6200
<b>CDU (Central Display Unit)</b>	Dual	Rockwell Collins CDU-6200
<b>IRS (Inertial Reference System)</b>	Triple	Honeywell LASEREF V
<b>GPS (Global Positioning System)</b>	Dual	Rockwell Collins GPS-4000A
<b>ADC (Air Data Computer)</b>	Dual	Rockwell Collins ADC-850E
<b>NAV (Navigation Radio)</b>	Dual	Rockwell Collins NAV-4000
<b>DME (Distance Measuring Equipment)</b>	Dual	Rockwell Collins DME-4000
<b>EFB (Electronic Flight Bag)</b>	Single	Rockwell Collins EFB-6000
<b>ADF (Automatic Direction Finder)</b>	Single	Rockwell Collins ANT-462
<b>VHF COM (Very High Freq. Communication)</b>	Triple	Rockwell Collins VHF-4000
<b>HF COM (High Freq. Communications)</b>	Dual	Rockwell Collins HF-9031A
<b>SATCOM (Satellite Communications)</b>	Single	ICG ICS-200, Iridium System
<b>SELCAL (Selective Calling System)</b>	Single	Avtech CSD-714
<b>ACARS (Aircraft Comm. Addressing and Recording System)</b>	Single	Rockwell Collins CMU-4000
<b>WRADAR (Weather Radar)</b>	Single	Rockwell Collins RTA-854
<b>RADAR ALT (Radar Altimeter)</b>	Single	Rockwell Collins ALT-4000
<b>XPNDR (Transponder)</b>	Dual	Rockwell Collins TDR-94D
<b>EGPWS (Enhanced Ground Proximity Warning System)</b>	Single	Honeywell MK V
<b>TCAS (Traffic Collision Avoidance System)</b>	Single	Rockwell Collins TTR-4000 TCAS II
<b>CVR (Cockpit Voice Recorder)</b>	Single	L3 Communication FA2100
<b>FDR (Flight Data Recorder)</b>	Single	L3 Communication FA2100
<b>ELT (Emergency Locator Transmitter)</b>	Single	Artex C406-N w/ 406Mhz
<b>LSS (Lighting Sensor System)</b>	Single	Rockwell Collins WX-1000

## OTHER NOTABLE FEATURES

SB 605-23-001 – Third VHF Communication System  
 SB 605-23-002 – Datalink System  
 SB 605-24-008 – Additional 40 Cubic Feet Oxygen Bottle  
 SB 605-34-002 – FMS w/ 3D Map & Long-Range Cruise  
 SB 605-34-004 – Third IRS LASEREF IV  
 SB 605-34-006 – Lightning Detection System  
 SB 605-34-009 – DBU-5000  
 SB 605-34-013 – Automatic Dependent Surveillance – Broadcast Out (“ADS-B Out”)  
 SB 605-34-018 – TCAS Change 7.1  
 SB 605-46-002 – Universal Graphical Weather on the MFD  
 SB 605-46-003 – XM Graphical Weather



## MAJOR INSPECTION STATUS

Inspection	Last performed	Next due
<b>12 MONTH</b>	December 2016	December 2017
<b>24 MONTH</b>	December 2015	December 2017
<b>36 MONTH</b>	December 2015	December 2018
<b>48 MONTH</b>	March 2014	February 2018
<b>96 MONTH</b>		February 2018

# 2010 Bombardier Challenger 605 s/N 5776

## INTERIOR

	Description
<b>NUMBER OF PASSENGERS</b>	Ten (10)
<b>GALLEY LOCATION</b>	Forward
<b>FORWARD CABIN CONFIGURATION</b>	Four (4) Place Double Club
<b>AFT CABIN CONFIGURATION</b>	Two (2) Place Club Opposite Four (4) Place Berthing Divan
<b>LAVATORY LOCATION(S)</b>	Aft
<b>JUMPSEAT</b>	Yes
<b>GALLEY EQUIPMENT</b>	TIA Microwave Oven; TIA Convection Oven; and TIA Coffee Maker; Pull-Out Work Surface; and Custom Thermal Coffee Jugs
<b>OTHER FEATURE(S)</b>	Single Jet Bed w/ Pump; Single Sky Lounger; Spare Carpet; and Foot Rests

## EXTERIOR

<b>BASE PAINT COLOR(S)</b>	Overall Matterhorn White and Blue Base Coat
<b>STRIPE COLOR(S)</b>	Blue
<b>OTHER FEATURE(S)</b>	3M Erosion Boots On Winglets and Flap Canoe Fairings, External Compartment Lights



## ENTERTAINMENT

<b>DISPLAY/TV MONITOR(S)</b>	Dual 18.0" LCD Bulkhead Monitors
<b>PLUG-IN / INDIVIDUAL MONITOR(S)</b>	"In Arm" Monitors in Singles Seats
<b>AIRSHOW SYSTEM</b>	ASXi Interactive w/ Network
<b>OTHER FEATURE(S)</b>	Dual DVD / CD Player; and XM Radio



# 2010 Bombardier Challenger 605 s/N 5776



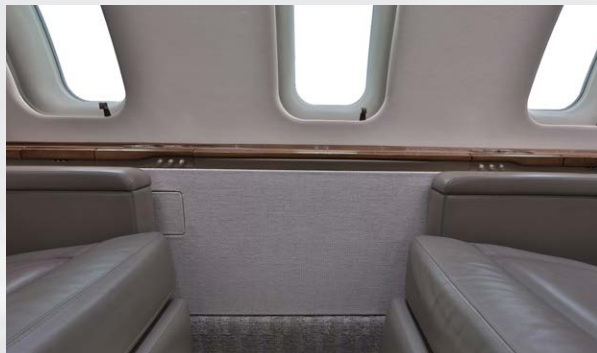
# 2010 Bombardier Challenger 605 s/N 5776



# 2010 Bombardier Challenger 605 s/N 5776

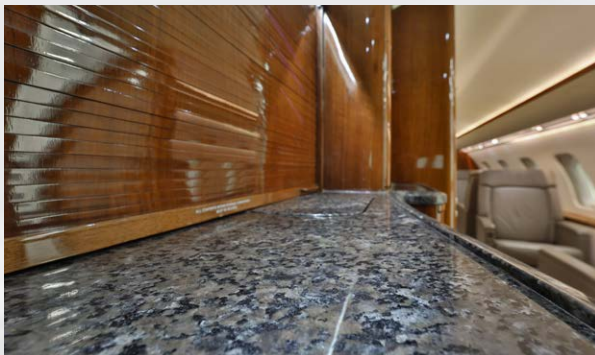


# 2010 Bombardier Challenger 605 s/N 5776





# 2010 Bombardier Challenger 605 s/N 5776



# 2010 Bombardier Challenger 605 s/N 5776



# 2010 Bombardier Challenger 605 s/N 5776



JETCRAFT 

INFO@JETCRAFT.COM +1 919 941 8400 JETCRAFT.COM

Specifications and/or descriptions are provided as introductory information only and do not constitute representations or warranties. Verification of specifications remain the sole responsibility of purchaser. Aircraft is subject to prior sale, lease, and/or removal from the market without prior notice.

# 2010 Bombardier Challenger 605 s/N 5776



