



2017 Bombardier Challenger 350 s/N 20701



2017 Bombardier Challenger 350 S/N 20701

HIGHLIGHTS

ENGINES AND APU ENROLLED ON PROGRAMS



AIRFRAME UNDER FACTORY WARRANTY



FANS 1/A+ (CPDLC + ADS-C) & ADS-B OUT COMPLIANT



10 PASSENGER CONFIGURATION W/ BELTED LAV

AIRFRAME

TOTAL TIME SINCE NEW	1,016 Hours (as of 15 February 2019)
TOTAL LANDINGS SINCE NEW	511 Landings
CERTIFICATION DATE	22 September 2017
ENTRY INTO SERVICE DATE	29 September 2017
HOME BASE	United States
MAINTENANCE TRACKING	CAMP
CERTIFICATION	Part 135



ENGINES

	Left Engine	Right Engine
DESCRIPTION	Honeywell AS907-2-1A	
SERIAL NUMBER(S)	P136497	P136496
TOTAL HOURS SINCE NEW	1,016 Hours	1,016 Hours
TOTAL CYCLES SINCE NEW	521 Cycles	521 Cycles
PROGRAM COVERAGE	Honeywell MSP Gold	



APU

DESCRIPTION	Honeywell GTCP36-150(BD)
SERIAL NUMBER	P-787
APU TOTAL TIME SINCE NEW	1,025 Hours
PROGRAM COVERAGE	Honeywell MSP Gold

2017 Bombardier Challenger 350 S/N 20701

AVIONICS

Type of Unit	Quantity	Description
EFIS (Electronic Flight Instrument System)	Four Tube	12"x10" Portrait active Matrix LCDS
FMS (Flight Management System)	Dual	Collins FMC-6200
IRS (Inertial Reference System)	Dual	Honeywell LASEREF VI
CDU (Central Display Unit)	Dual	Collins CDU-5200
GPS (Global Positioning System)	Dual	Collins GPS-4000
NAV (Navigation Radio)	Dual	Collins NAV-4000
DME (Distance Measuring Equipment)	Dual	Collins DME-4000
SVS (Synthetic Vision System)	Single	Collins SVC-3000
ADF (Automatic Direction Finder)	Single	Collins NAV-4000
VHF COM (Very High Freq. Communications)	Triple	Collins VHF-4000
HF COM (High Freq. Communications)	Dual	Collins HF-9031A w/ Selcal
SATCOM (Satellite Communications)	Single	Inmarsat Iridium
RADAR (Radar)	Single	MultiScan Threat Detection System
RADAR ALT (Radar Altimeter)	Single	Collins ALT-4000
RIU (Radio Interface Units)	Dual	Collins RIU-4000
XPNDR (Transponder)	Single	Collins TRD-94D
EGPWS (Enhanced Ground Proximity Warning System)	Single	Honeywell Mark V w/ RAAS
TCAS (Traffic Collision Avoidance System)	Single	Collins TSS-4100
ELT (Emergency Locator Transmitter)	Single	Artex C406-N
CVR (Cockpit Voice Recorder)	Single	CVR 120 min
FDR (Flight Data Recorder)	Single	25 Hours Solid State FDR

NAVIGATION & COMPLIANCE

RVSM	NAT MNPS
B-RNAV (RNP 5)	RNP 10
Steep Approach Capability	FANS 1/A+ (CPDLC + ADS-C)
ADS-B Out	Link 2000+

ENTERTAINMENT

DISPLAY/TV MONITOR	22" Monitors on both Forward and Aft Bulkheads
CONNECTIVITY	Inmarsat Swift Broadband
OTHER NOTABLE FEATURE(S)	Blue ray DVD Player; MP3 audio inputs

CONNECTIVITY

IN FLIGHT PHONE	Dual Channel Iridium ST-3100 Satphone
HSD / WI-FI	Inmarsat Swift Broadband w/ Cockpit Safety

MAJOR INSPECTION STATUS

Inspection	Last performed	Next due
12 MONTH CHECK	04 September 2018	28 September 2019
24 MONTH CHECK	-	28 September 2019
36 MONTH CHECK	-	28 September 2020
48 MONTH CHECK	-	28 September 2021
96 MONTH CHECK	-	28 September 2025



INFO@JETCRAFT.COM +1 919 941 8400 JETCRAFT.COM

Specifications and/or descriptions are provided as introductory information only and do not constitute representations or warranties. Verification of specifications remain the sole responsibility of purchaser. Photographs and images may have been modified to remove logos, registration marks, or other identifying information to protect the privacy of the Aircraft's current owner. The Aircraft is subject to prior sale, lease, and/or removal from the market without prior notice.

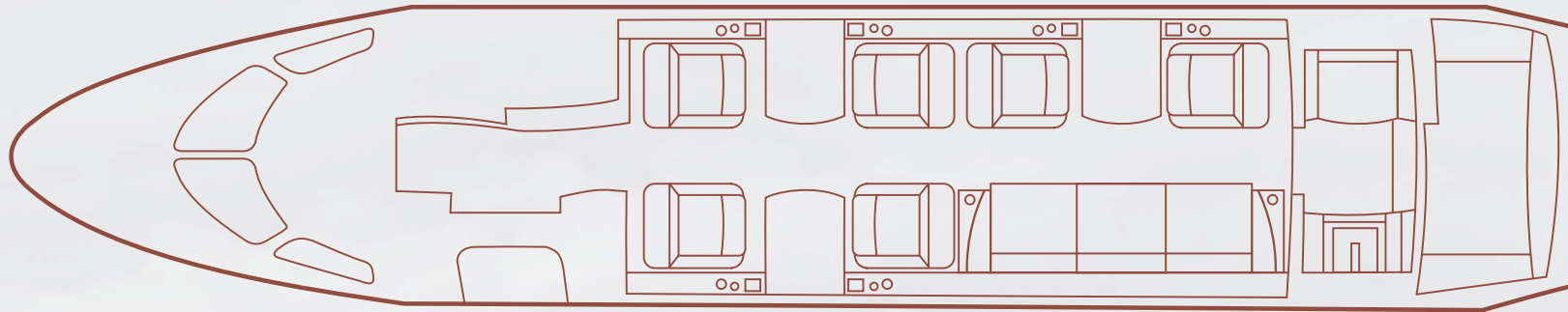
2017 Bombardier Challenger 350 S/N 20701

INTERIOR

	Description
NUMBER OF PASSENGERS	Ten (10) Passengers
GALLEY LOCATION	Forward
FORWARD CABIN CONFIGURATION	Four (4) Place Double Club w/ Retractable Tables
AFT CABIN CONFIGURATION	Two (2) Place Single Club w/ Retractable Table, Opposite a Three (3) Place Divan
LAVATORY LOCATION(S)	Aft Belted Lavatory
GALLEY EQUIPMENT	TIA Coffee Maker, Ice Drawers; WaveJet Microwave Oven
REFURBISHMENT DATE	Original

EXTERIOR

BASE PAINT COLOR(S)	Snow White
STRIPE COLOR(S)	Gold and Grey
LAST PAINTED DATE	Original



2017 Bombardier Challenger 350 S/N 20701



2017 Bombardier Challenger 350 s/N 20701



2017 Bombardier Challenger 350 S/N 20701



2017 Bombardier Challenger 350 S/N 20701

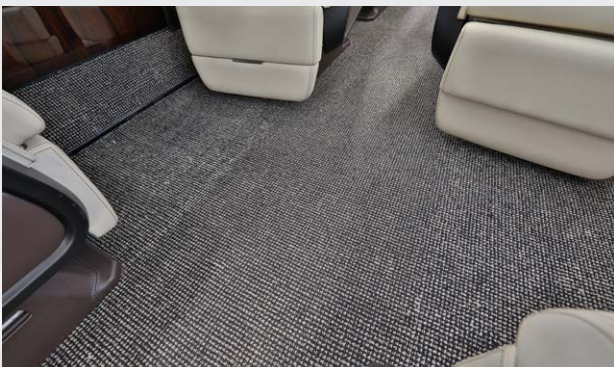
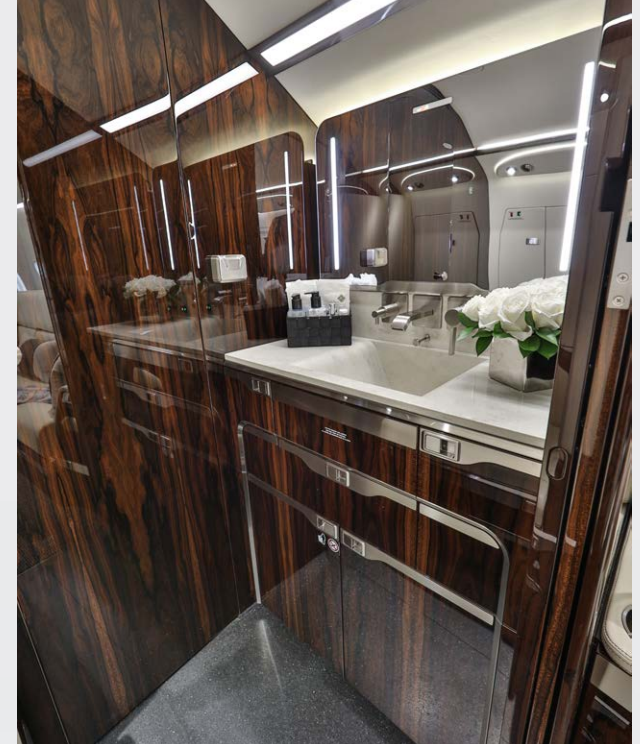


JETCRAFT 

INFO@JETCRAFT.COM +1 919 941 8400 JETCRAFT.COM

Specifications and/or descriptions are provided as introductory information only and do not constitute representations or warranties. Verification of specifications remain the sole responsibility of purchaser. Photographs and images may have been modified to remove logos, registration marks, or other identifying information to protect the privacy of the Aircraft's current owner. The Aircraft is subject to prior sale, lease, and/or removal from the market without prior notice.

2017 Bombardier Challenger 350 S/N 20701



JETCRAFT 

INFO@JETCRAFT.COM +1 919 941 8400 JETCRAFT.COM

Specifications and/or descriptions are provided as introductory information only and do not constitute representations or warranties. Verification of specifications remain the sole responsibility of purchaser. Photographs and images may have been modified to remove logos, registration marks, or other identifying information to protect the privacy of the Aircraft's current owner. The Aircraft is subject to prior sale, lease, and/or removal from the market without prior notice.

2017 Bombardier Challenger 350 s/N 20701



2017 Bombardier Challenger 350 s/N 20701



JETCRAFT 

INFO@JETCRAFT.COM +1 919 941 8400 JETCRAFT.COM

Specifications and/or descriptions are provided as introductory information only and do not constitute representations or warranties. Verification of specifications remain the sole responsibility of purchaser. Photographs and images may have been modified to remove logos, registration marks, or other identifying information to protect the privacy of the Aircraft's current owner. The Aircraft is subject to prior sale, lease, and/or removal from the market without prior notice.

