



2008 DASSAULT FALCON 2000LX S/N 136



2008 DASSAULT FALCON 2000LX S/N 136

HIGHLIGHTS

ENGINES ON ESP PLATINUM



RECENT C CHECK



SYNTHETIC VISION



ADS-B OUT



FANS 1/A / CPDLC



AVANCE L5 | SWIFTBROADBAND

AIRFRAME

TOTAL TIME SINCE NEW	2,824 Hours (As of March 17th 2020)
TOTAL LANDINGS SINCE NEW	1,840 Landings
HOME BASE	Dallas Texas, U.S.A (Love Field)
PROGRAM	Eligible for FalconCare Enrollment



ENGINES

	Left Engine	Right Engine
DESCRIPTION	Pratt & Whitney PW 308C	
SERIAL NUMBER(S)	PCE-CF0297	PCE-CF0313
TOTAL HOURS SINCE NEW	2,824 Hours	2,746 Hours
TOTAL CYCLES SINCE NEW	1,840 Cycles	1,816 Cycles
PROGRAM	ESP Platinum	



APU

DESCRIPTION	Honeywell GTCP36-150
SERIAL NUMBER	P-495
APU TOTAL TIME SINCE NEW	2,632 Hours
PROGRAM	MSP Gold

2008 DASSAULT FALCON 2000LX S/N 136

AVIONICS

Type of Unit	Quantity	Description
EFIS (Electronic Flight Instrument System)	Quad	Honeywell Primus Epic
FMS (Flight Management System)	Dual	Honeywell EASy II
IRS (Inertial Reference System)	Dual	Honeywell LASEREF EF5 - MIRU
GPS (Global Positioning System)	Dual	Honeywell EASy II
DME (Distance Measuring Equipment)	Dual	Honeywell DM-855
SVS (Synthetic Vision System)	Single	Smartview Synthetic Vision
ADF (Automatic Direction Finder)	Dual	Honeywell DF-855
VHF COM (Very High Freq. Communications)	Triple	Honeywell TR-866B
HF COM (High Freq. Communications)	Dual	Rockwell Collins HF-9000 w/ SELCAL
SATCOM (Satellite Communications)	Single	Aviator 700D
WRADAR (Weather Radar)	Single	Honeywell Primus 880
EGPWS (Enhanced Ground Proximity Warning System)	Single	Honeywell EGPW EASy
XPNDR (Transponder)	Dual	Honeywell XS-854A Mode S
TCAS (Traffic Collision Avoidance System)	Single	ACCS TCAS 3000 w/ 7.1
RA (Radar Altimeter)	Single	Honeywell RT-300
LDS (Lightning Detection Sensor)	Single	Honeywell LSS-860
ELT (Emergency Locator Transmitter)	Single	ELTA ADT-406
CVR (Cockpit Voice Recorder)	Single	Honeywell SSCVR (120 Mins)
FDR (Flight Data Recorder)	Single	Honeywell SSFDR

MAJOR INSPECTION STATUS

Inspection	Last performed	Next due
12 MONTH	February 2020	February 2021
24 MONTH	February 2020	February 2022
36 MONTH	February 2020	February 2023
1C INSPECTION	February 2020	February 2026
2C INSPECTION	February 2020	February 2032
3C INSPECTION	-	February 2026



NOTABLE SERVICE BULLETINS

SB F2000EX-286R1	TCAS Change 7.1
SB F2000EX-300	EASy II Baseline
SB F2000EX-302	ADS-B Out Installation
SB F2000EX-303	Smartview Synthetic Vision System
SB F2000EX-308	Controller Pilot Data Link Communication CPDLC
SB F2000EX-309	FANS 1/A Installation

2008 DASSAULT FALCON 2000LX S/N 136

INTERIOR

	Description
NUMBER OF PASSENGERS	Eight (8)
FORWARD CABIN CONFIGURATION	Four (4) Place Club
AFT CABIN CONFIGURATION	Four (4) Place Conference Group Opposite a Two (2) Place Settee (Not Certified for T/O)
LAVATORY LOCATION(S)	Aft
GALLEY EQUIPMENT	Coffee Maker, High Temp Oven, Microwave Oven, Espresso Machine
LAST REFURBISHMENT DATE	2017
OTHER	8 USB Charging Ports

EXTERIOR

BASE PAINT COLOR(S)	White
STRIPE COLORS	Blue & Grey
LAST PAINT DATE	2017



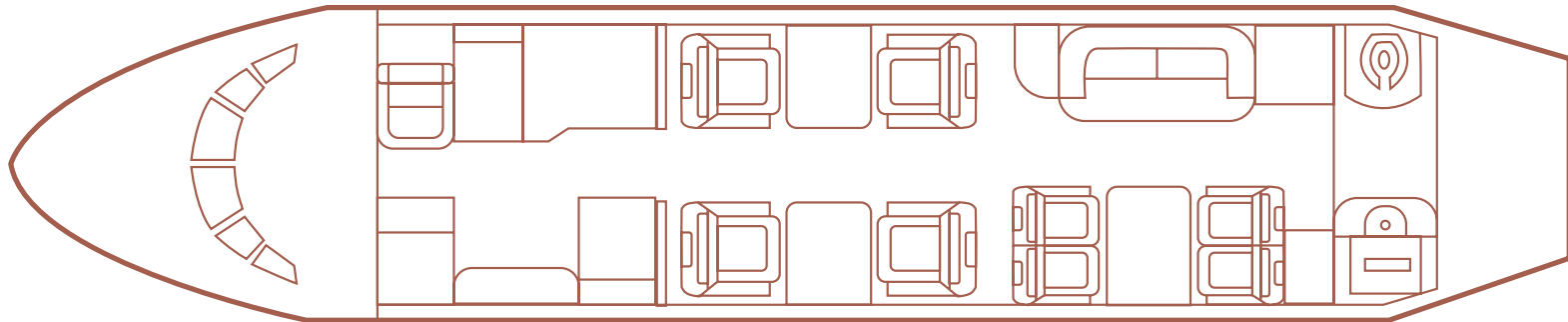
ENTERTAINMENT

DISPLAY / TV MONITORS	20.0" FWD Bulkhead Monitor & Three (3) 8.4" Rosen Plug-In LCD Monitors
CABIN MANAGEMENT SYSTEM	SPS Generation II
DVD PLAYER	Dual



CONNECTIVITY

HIGH SPEED INTERNET	Avance L5 Swiftbroadband
PHONE SYSTEM	SATCOM – Thrane & Thrane (1)



2008 DASSAULT FALCON 2000LX S/N 136



2008 DASSAULT FALCON 2000LX S/N 136



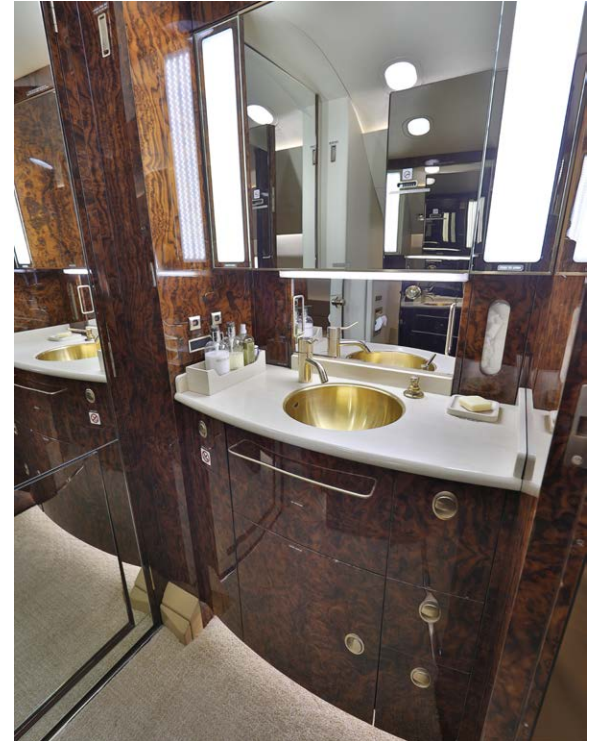
2008 DASSAULT FALCON 2000LX S/N 136



2008 DASSAULT FALCON 2000LX S/N 136



2008 DASSAULT FALCON 2000LX S/N 136



2008 DASSAULT FALCON 2000LX S/N 136



2008 DASSAULT FALCON 2000LX S/N 136



2008 DASSAULT FALCON 2000LX S/N 136



