

1997 GULFSTREAM GV S/N 533



Offered exclusively by Jetcraft, through AlePreowned, the official Jetcraft authorised representative in Mexico, Central America and the Caribbean.

1997 GULFSTREAM GV S/N 533

HIGHLIGHTS

ENGINES ON RRCC



ONE OWNER SINCE NEW



FRESH 1A, 2A, 1C, 5C - SAVANNAH, GA



DU-885 PLANE DECK



ADS-B OUT V2



FANS 1/A (AFN / CPDLC / ADB-C)

AIRFRAME

TOTAL TIME SINCE NEW	7,150.6 Hours (as of May 26th 2020)
TOTAL LANDINGS SINCE NEW	2,654 Landings
ENTRY INTO SERVICE DATE	1999
HOME BASE	Toluca, Mexico (MMTO)
PROGRAM COVERAGE	MPP
MAINTENANCE TRACKING	My CMP
CERTIFICATION	XA-VDW



ENGINES

	Left Engine	Right Engine
DESCRIPTION	ROLLS ROYCE BR700-710-1A10	
SERIAL NUMBER(S)	11171	11172
TOTAL HOURS SINCE NEW	7,110.5 Hours	7,110.5 Hours
TOTAL CYCLES SINCE NEW	2,635 Cycles	2,635 Cycles
HSI DUE / OVERHAUL DUE	HARD TIME: MID LIFE Feb 2008 at 3,392.9 Hours. Remaining Both Engines	
PROGRAM COVERAGE	RRCC	



APU

DESCRIPTION	HW RE220
SERIAL NUMBER	134
APU TOTAL TIME SINCE NEW	5,202 Hours
HSI DUE / OVERHAUL DUE	On Condition
PROGRAM COVERAGE	None

1997 GULFSTREAM GV S/N 533

AVIONICS

Type of Unit	Quantity	Description
EFIS (Electronic Flight Instrument System)	Four	DU885 SW PEAFF V1-1.01/v2.00.02
FMS (Flight Management System)	Dual	IAC 6.1SW with SBASS/LPV/GPS
CDU (Central Display Unit)	Triple	Honeywell CD 830 G7830-03
IRS (Inertial Reference System)	Triple	Honeywell UNIT IV IR-300
GPS (Global Positioning System)	Dual	Honeywell GR-550
ADC (Air Data Computer)	Triple	Honeywell-AZ850
NAV (Navigation Radio)	Dual	Nav-ILS VIR 432
DAU (Data Acquisition Unit)	Dual	Honeywell-DA-800
IAC (Integrated Avionic Computer)	Dual	Honeywell IC-810E
DME (Distance Measuring Equipment)	Dual	Collins DME-442
HUD (Head Up Display)	Single	Honeywell HG-200
SVS (Synthetic Vision System)	Dual	PEAF (PFD1 and PFD2)
EFB (Electronic Flight Bag)	Dual	ND No 2 and ND No 4
ADF (Automatic Direction Finder)	Dual	Rockwell Collins ADF-462
A/P (Autopilot)	Dual	Honeywell
VHF COM (Very High Freq. Communications)	Triple	Rockwell Collins VHF (422D/422B)
HF COM (High Freq. Communications)	Dual	Rockwell Collins 9000 Antenna - SELCAL
SATCOM (Satellite Communications)	Single	Honeywell SDU 75166118-27010
SELCAL (Selective Calling System)	Dual	HF and VHF
ACARS (Aircraft Comm. Addressing and Recording Sys.)	Dual	Honeywell CMU
WRADAR (Weather Radar)	Single	Honeywell-XMD-157
RADAR ALT (Radar Altimeter)	Dual	Rockwell Collins -RT300
XPNDR (Transponder)	Dual	Rockwell Collins S Transponder-TDR-94D
GPWS (Ground Proximity Warning System)	Single	Honeywell EGPWS-GLU-920
TCAS (Traffic Collision Avoidance System)	Single	TCAS 7.1
CVR (Cockpit Voice Recorder)	Single	L3 Aviation-FA2100
FDR (Flight Data Recorder)	Single	L3 Aviation-ULB
ELT (Emergency Locator Transmitter)	Single	453-0406
LSS (Lighting Sensor System)	Single	Honeywell LP-850

OTHER NOTABLE FEATURES

ASC 183A: ELECTRONIC DISPLAY SYSTEM – DU-885 LIQUID CRYSTAL DISPLAY INSTALLATION. DATA LOADER DL 1000
- C/W July, 2012

ASC 188B (PART 2): TCAS 7.1
- Installed TCAS modified

ASC 209: FMS 6.1 WITH SBAS/LPV GPS
- Installed new Global Navigation System Sensors Units Installed modified NZ2010
- Installed modified IACs Installed new GPS Antennas CW March, 2015.

FANS 1/A + (AFN, CPDLC, ADS-C)
- CMU MKIII + PRINTER + Cockpit Voice Recorder (CVR) Model FA2100 CW May, 2016.

PDSV-SVS
- PRIMUS ELITE ADVANCED FEATURES PEAFF
- Installed Simbol Generators Modified
- Installed DU-885 Modified
- Installed New CDUs CD-830 IAW
- STC ST04039AT-D, CW Jan, 2017

ASC 214: AUTOMATIC DEPENDENT SURVEILLANCE BROADCAST OUT ADS-B OUT VERSION 2
- Installed ATC Transponders Modified, CW Jul, 2017.

TALON AEROSPACE LED REPLACEMENT
- Installed LED Lamps Landing, Taxi and Runway Lights. Applied Jan, 2019

CB 230: MODIFICATION DU-885 SOFTWARE UPDATE – V1.10.01/ V2.00.02
- Installed DU-885
- Installed IACs Modified
- Installed NZ2010 Modified
- Software Update

SATCOM DIRECT ROUTER (SDR) UPGRADE
- Installed new SDR
- Installed new Configuration Module, new WiFi Antenna and a new 3G/4G Antenna
- IAW STC ST11071SC
- Complied with Jan, 2018



MAJOR INSPECTION STATUS

Inspection	Last performed	Next due
12 MONTH	January 2020	January 2021
24 MONTH	January 2019	January 2021
36 MONTH	January 2020	January 2023
48 MONTH	January 2019	January 2023
72 MONTH	January 2017	January 2023
96 MONTH	January 2015	January 2023

1997 GULFSTREAM GV S/N 533

INTERIOR

	Description
NUMBER OF PASSENGERS	16 Passengers
GALLEY LOCATION	FWD Galley
FORWARD CABIN CONFIGURATION	4 Single Club Seats
MID CABIN CONFIGURATION	4 Single Club Seats
AFT CABIN CONFIGURATION	2 Four Place facing Divans
LAVATORY LOCATION(S)	FWD and AFT
CREW REST	Yes
JUMPSEAT	Yes
LAST REFURBISHED DATE	Interior 2015 Gulfstream Dallas

GALLEY EQUIPMENT:

MICROWAVE	Yes
HIGH TEMP OVEN	Yes
COFFEE/ESPRESSO MAKER	Yes

NAVIGATION & COMPLIANCE

RVSM	FANS 1/A
CPDLC	ADS-B

EXTERIOR

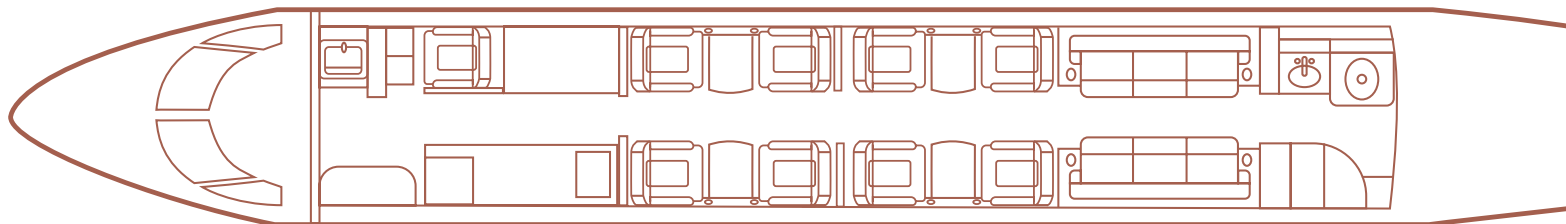
BASE PAINT COLOR(S)	White
STRIPE COLOR(S)	Red/Black
LAST PAINTED DATE	2009

ENTERTAINMENT

DISPLAY/TV MONITOR(S)	2 TV Monitors 20"
PERSONAL / PLUG-IN MONITOR(S)	8 Individual Monitors + 1 Individual Monitor in Crew Rest
AIRSHOW SYSTEM	Yes
CABIN MANAGEMENT SYSTEM	Pacific System (Rockwell Collins)
VIDEO CAMERA	Fwd View, Back View, Cockpit View, H-Stab Fwd View

CONNECTIVITY

HIGH SPEED INTERNET	GOGO BUSINESS AVIATION - ATG 5000/Swiftbroadband with SDR and Global One Number (Satcom Direct), AMT50
PHONE SYSTEM	HONEYWELL LM, MCS-4000/MCS-7000 MULTI-CHANNEL SATCOM SYSTEM



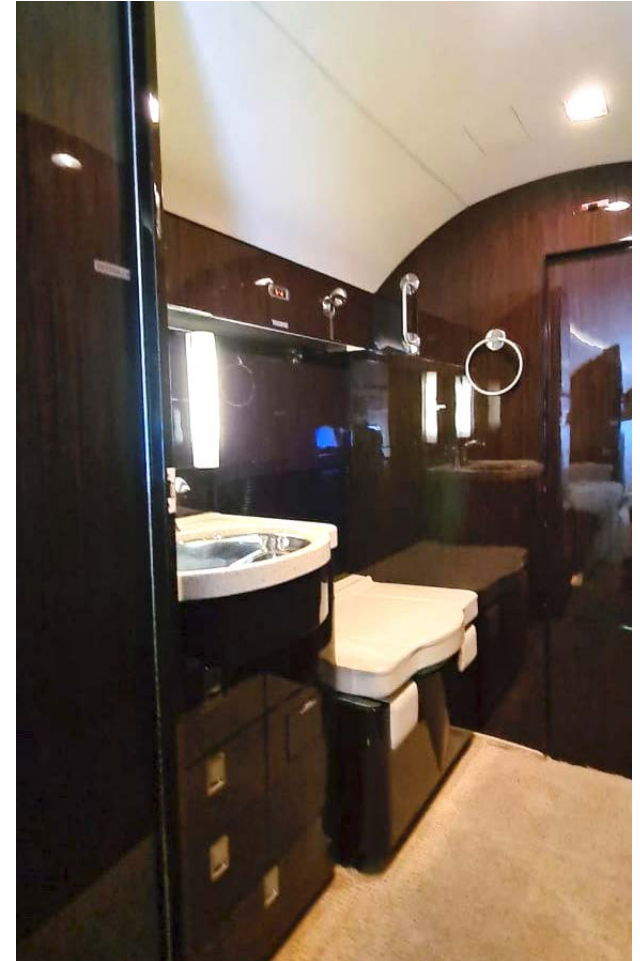
1997 GULFSTREAM GV S/N 533



1997 GULFSTREAM GV S/N 533



1997 GULFSTREAM GV S/N 533



1997 GULFSTREAM GV S/N 533



