



2012 BOMBARDIER GLOBAL 6000 S/N 9456



2012 BOMBARDIER GLOBAL 6000 S/N 9456

HIGHLIGHTS

FULLY PROGRAMMED



30-MONTH INSPECTION C/W IN AUG 2020



HUD, EVS AND SVS



13 PAX CABIN CONFIGURATION



KA-BAND INTERNET AND SECURAPLANE

AIRFRAME

TOTAL TIME SINCE NEW	2,783:45' Hours (as of November 23, 2020)
TOTAL LANDINGS SINCE NEW	1,253 Landings
ENTRY INTO SERVICE DATE	October 04, 2012
CURRENT LOCATION	Paris Le Bourget, France
MAINTENANCE TRACKING	CAMP
CERTIFICATION	EASA EU OPS1
PROGRAM COVERAGE	Smart Part Plus



ENGINES

	Left Engine	Right Engine
DESCRIPTION	Rolls-Royce BR700-710A2-20	
SERIAL NUMBERS	22037	22036
TOTAL HOURS SINCE NEW	2,783:45' Hours	2,783:45' Hours
TOTAL CYCLES SINCE NEW	1,258 Cycles	1,258 Cycles
PROGRAM COVERAGE	JSSI PLATINIUM	



APU

DESCRIPTION	Honeywell RE220 (GX)
SERIAL NUMBER	P-583
APU TOTAL TIME SINCE NEW	1,877 Hours
PROGRAM COVERAGE	JSSI

2012 BOMBARDIER GLOBAL 6000 S/N 9456

AVIONICS

Type of Unit	Quantity	Description
EFIS (Electronic Flight Instrument System)	Dual	Integrated
FMS (Flight Management System)	Triple	Integrated
GPS (Global Positioning System)	Dual	Collins GPS-4000S
ADC (Air Data Computer)	Triple	Collins ADC-3020
NAV (Navigation Radio)	Dual	Collins NAV-4000
IRS (Inertial Reference System)	Triple	Honeywell IR-600 (LASEREF VI)
DME (Distance Measuring Equipment)	Dual	Collins DME-4000
EVS (Enhanced Vision System)	Single	Bombardier
HGS (Head Up Guidance System)	Single	Bombardier
SVS (Synthetic Vision System)	Dual	SVM-6110
ADF (Automatic Direction Finder)	Dual	Collins NAV-4000
FLT DIR (Flight Director)	Dual	Integrated AFCS (Auto Flight Control System)
A/P (Autopilot)	Dual	Integrated AFCS (Auto Flight Control System)
VHF COM (Very High Freq. Communication)	Triple	Collins VHF-4000
HF COM (High Freq. Communications)	Dual	Collins HF-9031A
SATCOM (Satellite Communications)	Single	Collins SRT-2100
RADAR	Single	Collins RTA-4118
RAD ALT (Radio Altimeter)	Dual	Collins ALT-4000
XPNDR (Transponder)	Dual	TDR-94D + TSS-4100
TCAS (Traffic Collision Avoidance System)	Single	Collins TSS-4100 TCAS II change 7.1
ELT (Emergency Locator Transmitter)	Single	Artex 406
CVR (Cockpit Voice Recorder)	Single	L3 FA21000
FDR (Flight Data Recorder)	Single	L3 FA21000

NAVIGATION AND OTHER FEATURES

FANS 1/A - CPDLC	+LINK 2000
RVSM	ADS-B Out V2



MAJOR INSPECTION STATUS

Inspection	Last performed	Next due
15 MONTH	August 2020	August 2021
30 MONTH	August 2020	September 2022
60 MONTH	August 2017	September 2022
120 MONTH	--	September 2022

2012 BOMBARDIER GLOBAL 6000 S/N 9456

INTERIOR

	Description
NUMBER OF PASSENGERS	Thirteen (13) Passengers
GALLEY LOCATION	Forward Cabin
FORWARD CABIN CONFIGURATION	Four (4) Place Executive Club with Pull-out Tables
MID CABIN CONFIGURATION	Four (4) Place Conference Grouping opposite One (1) Single Office Seat
AFT CABIN CONFIGURATION	Two (2) Place Divan Opposite Two (2) Place Divan
LAVATORY LOCATIONS	Forward Crew Lavatory and Aft Executive Lavatory
CREW REST	Forward Left-Hand Full Crew Rest
JUMPSEAT	Yes, slide-out Jumpseat
GALLEY EQUIPMENT	Microwave Oven, Hi-Temp Oven, Espresso Coffee Machine
OTHER EQUIPMENT	Securaplane (5 Exterior Cameras) Spare Carpet (Condition: New)

EXTERIOR

BASE PAINT COLOR(S)	White
STRIPE COLOR(S)	Blue and Grey



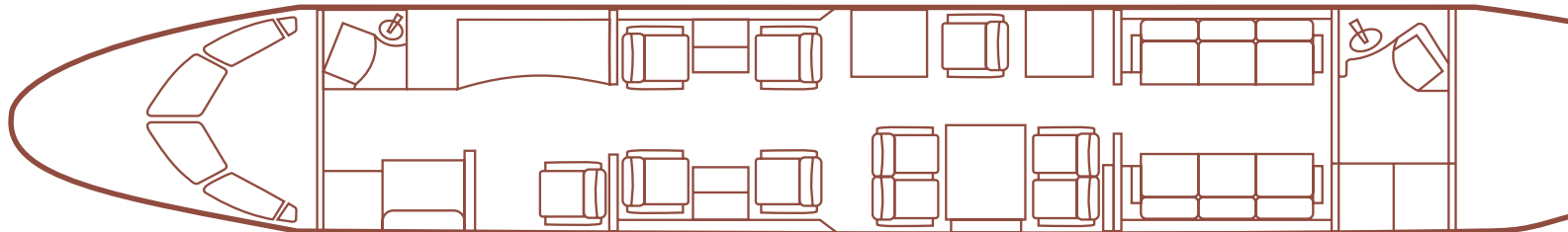
ENTERTAINMENT

DISPLAY/TV MONITORS	Two 24" HD LCD Bulkhead Monitors
VIDEO PLAYERS	Two Blu-ray Players
CMS (CABIN MANAGEMENT SYSTEM)	Single 10.2 CES Cabin



CONNECTIVITY

HIGH SPEED INTERNET	Ka-Band and SBB
PHONE SYSTEM	Iridium Telephone System



2012 BOMBARDIER GLOBAL 6000 S/N 9456



2012 BOMBARDIER GLOBAL 6000 S/N 9456



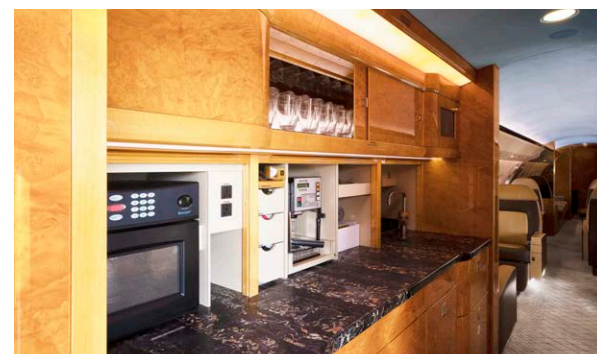
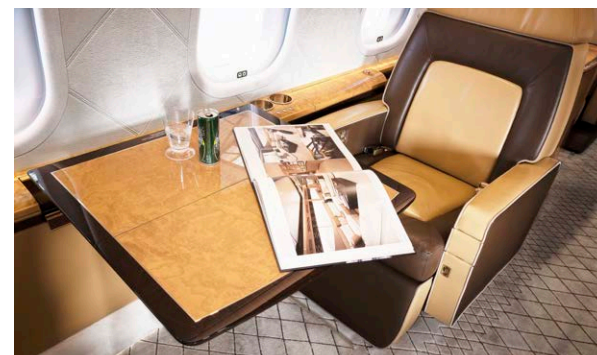
2012 BOMBARDIER GLOBAL 6000 S/N 9456



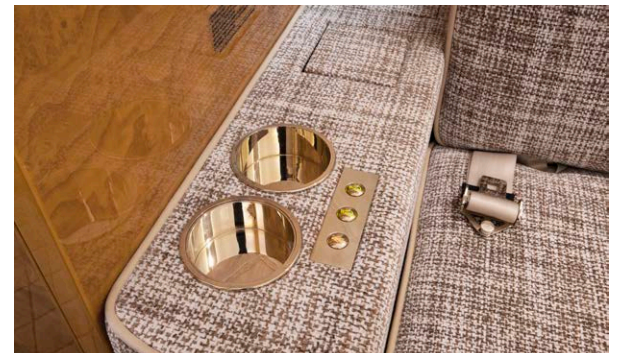
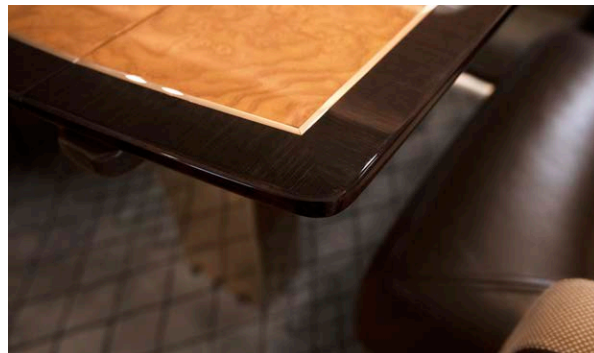
2012 BOMBARDIER GLOBAL 6000 S/N 9456



2012 BOMBARDIER GLOBAL 6000 S/N 9456



2012 BOMBARDIER GLOBAL 6000 S/N 9456



2012 BOMBARDIER GLOBAL 6000 S/N 9456



2012 BOMBARDIER GLOBAL 6000 S/N 9456



2012 BOMBARDIER GLOBAL 6000 S/N 9456



