

2009 Dassault Falcon 2000LX

S/N 182



JETCRAFT 

FOR YOUR WORLD

3,318

Hours

1,806

Landings



Highlights

- Engines on ESP Gold
- Recent 2C Completed
- Synthetic Vision & EVAS
- FANS 1/A / CPDLC
- ATG-4000

Airframe

TOTAL TIME SINCE NEW	3,318 Hours (As of April 22, 2022)
TOTAL LANDINGS SINCE NEW	1,806 Landings
HOME BASE	U.S.A
CERTIFICATION	FAR Part 91

Engines

	Left	Right
DESCRIPTION	Pratt & Whitney PW 308C	
SERIAL NUMBER(S)	PCE-CFO392	PCE-CFO396
TOTAL HOURS SINCE NEW	3,318 Hours	3,318 Hours
TOTAL CYCLES SINCE NEW	1,806 Cycles	1,806 Cycles
PROGRAM	ESP Gold	

APU

DESCRIPTION	Honeywell GTCP36-150 (F2M)
SERIAL NUMBER	P-545
APU TOTAL TIME SINCE NEW	2,409 Hours

Connectivity

HIGH SPEED INTERNET	ATG-4000
PHONE SYSTEM	Iridium Aircell Sat Phone

Entertainment

DISPLAY / TV MONITORS	Two (2) 20.0" Monitor & Four (4) 4" Rosen Plug-In LCD Monitors
DVD PLAYER	Dual
AIRSHOW SYSTEM	Airshow 4000

Avionics

Type of unit	Qty	Description
EFIS (ELECTRONIC FLIGHT INSTRUMENT SYSTEM)	Quad	Honeywell Primus Epic
FMS (FLIGHT MANAGEMENT SYSTEM)	Dual	Honeywell EASy II w/ EGPWS Module
IRS (INERTIAL REFERENCE SYSTEM)	Dual	Honeywell
GPS (GLOBAL POSITIONING SYSTEM)	Dual	Honeywell EASy II
DME (DISTANCE MEASURING EQUIPMENT)	Dual	Honeywell
SVS (SYNTHETIC VISION SYSTEM)	Single	Smartview Synthetic Vision
ADF (AUTOMATIC DIRECTION FINDER)	Dual	Honeywell ADF
ADM (AIR DATA MODULE)	Dual	Honeywell
VHF COM (VERY HIGH FREQ. COMMUNICATIONS)	Triple	Honeywell
HF COM (HIGH FREQ. COMMUNICATIONS)	Dual	Rockwell Collins HF
WRADAR (WEATHER RADAR)	Single	Honeywell Primus
EGPWS (ENHANCED GROUND PROXIMITY WARNING SYSTEM)	Single	Honeywell EGPWS
XPNDR (TRANSPONDER)	Dual	Honeywell Mode S
TCAS (Traffic Collision Avoidance System)	Single	TCAS 3000 w/ Change 7.1
RA (RADAR ALTIMETER)	Single	Honeywell RA

Type of unit	Qty	Description
ELT (EMERGENCY LOCATOR TRANSMITTER)	Single	ADT-406
CVR (COCKPIT VOICE RECORDER)	Single	Honeywell CVR
FDR (FLIGHT DATA RECORDER)	Single	Honeywell FDR

Notable service bulletins

FANS 1/A	CPDLC
WAAS/LPV	EASy II Cert 4 w/ Push to Load
ADS-B Out	Dual Jeppesen Charts
TCAS Change 7.1	Synthetic Vision System
EVAS	QAR (Quick Access Recorder) w/ 4G Cellular Module

Major inspection status

Inspection	Last Performed	Next Due
2C Inspection	August 2021	August 2027

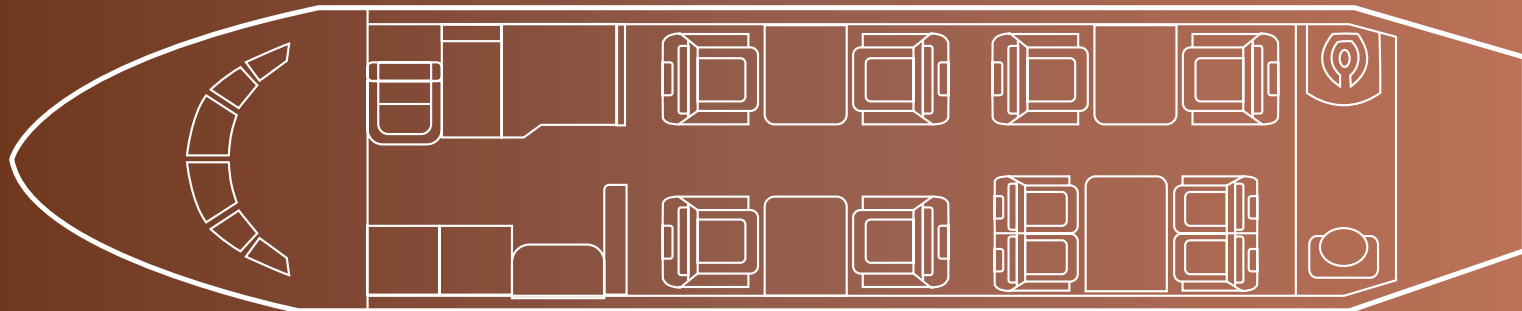
Interior

NUMBER OF PASSENGERS	Ten (10)
FORWARD CABIN CONFIGURATION	Four (4) Place Club
AFT CABIN CONFIGURATION	Four (4) Place Conference Group Opposite Two (2) Place Seats
LAVATORY LOCATION(S)	Aft
GALLEY EQUIPMENT	Microwave Oven, Coffee Maker
LAST REFURBISHMENT DATE	Original

Exterior

BASE PAINT COLOR(S)	White
STRIPE COLOR(S)	Grey and Blue
LAST PAINT DATE	2017 (Stripes)

Floorplan

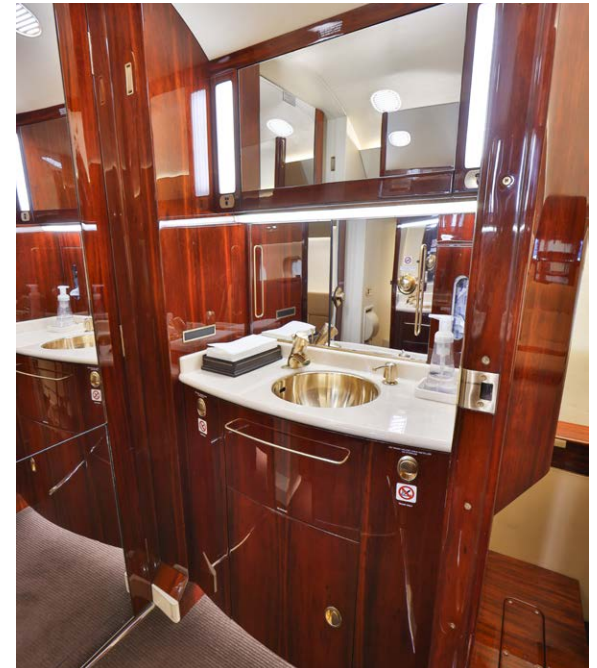


















JETCRAFT

FOR YOUR WORLD

info@jetcraft.com | +1 919 941 8400 | jetcraft.com

JETCRAFT.COM | PRIVATE AND CONFIDENTIAL | © JETCRAFT 2022