

1997 Gulfstream GV

S/N 533



1997 Gulfstream GV S/N 533

7,428

Hours

2,787

Landings



Highlights

- Fresh 12-24-48-72-96 month & Landing Gear Insp. at Gulfstream Dallas
- Engines Enrolled on RRCC
- Avionics Enrolled on Honeywell MPP Maintenance Program
- Honeywell Primus Elite DU 885
Planedek | ADS B Out v2 | FANS 1/A
- ATG 5000 & Swift Broadband Internet

1997 Gulfstream GV S/N 533

Airframe

TOTAL TIME SINCE NEW	7,428 Hours (as of Jan 07th 2023)
TOTAL LANDINGS SINCE NEW	2,787 Landings
ENTRY INTO SERVICE DATE	1997
PROGRAM COVERAGE	MPP
MAINTENANCE TRACKING	MYCMP
CERTIFICATION	FAA Part 91

Engines

	Left	Right
DESCRIPTION	Rolls-Royce BR700-710A1-10	
SERIAL NUMBER(S)	11171	11172
TOTAL HOURS SINCE NEW	7,388 Hours	7,388 Hours
TOTAL CYCLES SINCE NEW	2,768 Cycles	2,768 Cycles
HSI DUE / OVERHAUL DUE	8,000 FH	
PROGRAM COVERAGE	Rolls-Royce CorporateCare	

APU

DESCRIPTION	Honeywell RE-220
SERIAL NUMBER	P-134
APU TOTAL TIME SINCE NEW	5,432 Hours
HSI DUE / OVERHAUL DUE	On Condition
PROGRAM COVERAGE	None

Connectivity

HIGH SPEED INTERNET	Gogo Business Aviation - ATG-5000/ Swift Broadband with SDR and Global One Number (Satcom Direct), AMT50
PHONE SYSTEM	Honeywell LM, MCS-4000/MCS-7000 Multi-Channel Satcom System

Entertainment

DISPLAY / TV MONITOR(S)	2 TV Monitors 20"
PERSONAL / PLUG-IN MONITOR(S)	8 Individual Monitors + 1 Individual Monitor in Crew Rest
AIRSHOW SYSTEM	Yes
CABIN MANAGEMENT SYSTEM	Pacific System (Rockwell Collins)
VIDEO CAMERA	Fwd View, Rear View, Cockpit View, H-Stab Fwd View

Avionics

Type of unit	Qty	Description
EFIS (ELECTRONIC FLIGHT INSTRUMENT SYSTEM)	Four	DU885 SW PEAf V1-1.01/ v2.00.02
FMS (FLIGHT MANAGEMENT SYSTEM)	Dual	Collins GPS-4000S
CDU (CENTRAL DISPLAY UNIT)	Triple	Honeywell CD-830 G7830-03
IRS (INERTIAL REFERENCE SYSTEM)	Triple	Honeywell LASEREF IV IR-300
GPS (GLOBAL POSITIONING SYSTEM)	Dual	Honeywell GR-550
ADC (AIR DATA COMPUTER)	Triple	Honeywell AZ-850
NAV (NAVIGATION RADIO)	Dual	Honeywell VIR-432
DAU (DATA ACQUISITION UNIT)	Dual	Honeywell DA-800
IAC (INTEGRATED AVIONIC COMPUTER)	Dual	Honeywell IC-810E
DME (DISTANCE MEASURING EQUIPMENT)	Dual	Collins DME-442
HUD (HEAD UP DISPLAY)	Single	Honeywell HG-200
SVS (SYNTHETIC VISION SYSTEM)	Dual	PEAF (PFD1 and PFD2)
EFB (Electronic Flight Bag)	Dual	ND No 2 and ND No 4
ADF (AUTOMATIC DIRECTION FINDER)	Dual	Collins ADF-462
A/P (AUTOPILOT)	Dual	Honeywell SPZ-8500
VHF COM (VERY HIGH FREQ. COMMUNICATIONS)	Triple	Collins VHF (422D/422B)
HF COM (HIGH FREQ. COMMUNICATIONS)	Dual	Collins HF-9000 Antenna w/ SELCAL
SATCOM (SATELLITE COMMUNICATIONS)	Single	Honeywell SDU 75166118-27010
SELCAL (Selective Calling System)	Dual	HF and VHF

Type of unit	Qty	Description
WX RAD (WEATHER RADAR)	Single	Honeywell XMD-157
RAD ALT (RADAR ALTIMETER)	Dual	Collins RT-300
XPNDR (TRANSPONDER)	Dual	Collins Mode S TDR-94D
GPWS (GROUND PROXIMITY WARNING SYSTEM)	Single	Honeywell EGPWS GLU-920
TCAS (TRAFFIC COLLISION AVOIDANCE SYSTEM)	Single	TCAS 7:1
CVR (COCKPIT VOICE RECORDER)	Single	L3 Aviation FA2100
FDR (FLIGHT DATA RECORDER)	Single	L3 Aviation ULB
ELT (EMERGENCY LOCATOR TRANSMITTER)	Single	453-0406
LSS (LIGHTNING SENSOR SYSTEM)	Single	Honeywell LP-850

Major inspection status

Inspection	Last Performed	Next Due
12 Month	February 2023	February 2024
24 Month	February 2023	February 2025
36 Month	February 2023	February 2026
48 Month	February 2023	February 2027
72 Month	February 2023	February 2029
96 Month	February 2023	February 2031

1997 Gulfstream GV S/N 533

Other notable features

ASC 183A: Electronic Display System – DU-885 Liquid Crystal Display Installation. Data Loader DL 1000
- C/W July, 2012.

ASC 188B (Part 2): TCAS 7:1
- Installed TCAS modified.

ASC 209: FMS 6:1 with SBAS/LPV GPS
- Installed new Global Navigation System Sensors Units Installed modified NZ2010.
- Installed modified IACs Installed new GPS Antennas CW March, 2015.

FANS-1/A (AFN, CPDLC, ADS-C)
- CMU MKIII + Printer + Cockpit Voice Recorder (CVR) Model FA2100 CW May, 2016.

PDSV-SVS
- Primus Elite Advanced Features PEAf.
- Installed Simbol Generators Modified.
- Installed DU-885 Modified.
- Installed New CDUs CD-830 IAW.
- STC ST04039AT-D, CW Jan, 2017.

ASC 214: Automatic Dependent Surveillance Broadcast Out: ADS-B Out Version 2
- Installed ATC Transponders Modified, CW Jul, 2017.

TALON AEROSPACE LED REPLACEMENT
- Installed LED Lamps Landing, Taxi and Runway Lights. Applied Jan, 2019.

CB 230: MODIFICATION DU-885 Software Update - V1.10.01/ V2.00.02
- Installed DU-885.
- Installed IACs Modified.
- Installed NZ2010 Modified.
- Software Update.

SATCOM DIRECT ROUTER (SDR) Upgrade
- Installed new SDR
- Installed new Configuration Module, new WiFi Antenna and a new 3G/4G Antenna
- IAW STC ST11071SC
- Complied with Jan, 2018

Navigation & compliance

RVSM

FANS-1/A

1997 Gulfstream GV S/N 533

Interior

NUMBER OF PASSENGERS	16 passengers
GALLEY LOCATION	Fwd LS
FORWARD CABIN CONFIGURATION	4 Single Club Seats
MID CABIN CONFIGURATION	4 Single Club Seats
AFT CABIN CONFIGURATION	2 Four Place facing Divans
LAVATORY LOCATION(S)	Fwd & Aft
CREW REST	Yes
JUMPSEAT	Yes
LAST REFURBISHED DATE	2015 at Gulfstream Dallas

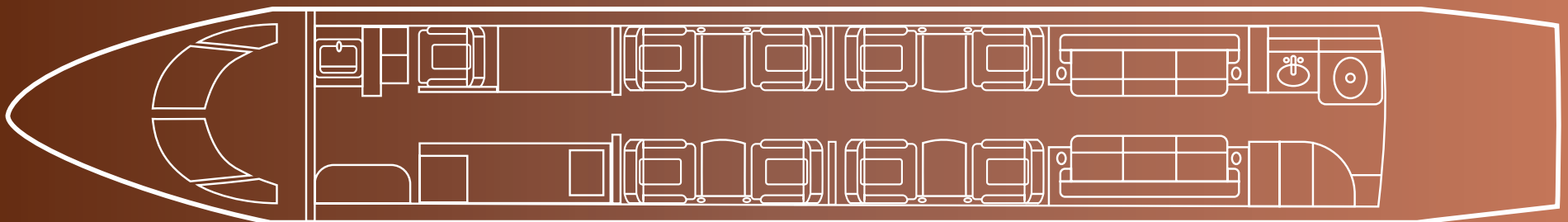
Interior (cont.)

GALLEY EQUIPMENT:	
MICROWAVE	Yes
HIGH TEMP OVEN	Yes
COFFEE/ESPRESSO MAKER	Yes

Exterior

BASE PAINT COLOR(S)	White
STRIPE COLOR(S)	Red & Black
LAST PAINTED DATE	2009

Floorplan



Specifications and/or descriptions are provided as introductory information only and do not constitute representations or warranties. Verification of specifications remain the sole responsibility of purchaser. Photographs and images may have been modified to remove logos, registration marks, or other identifying information to protect the privacy of the Aircraft's current owner. The Aircraft is subject to prior sale, lease, and/or removal from the market without prior notice.

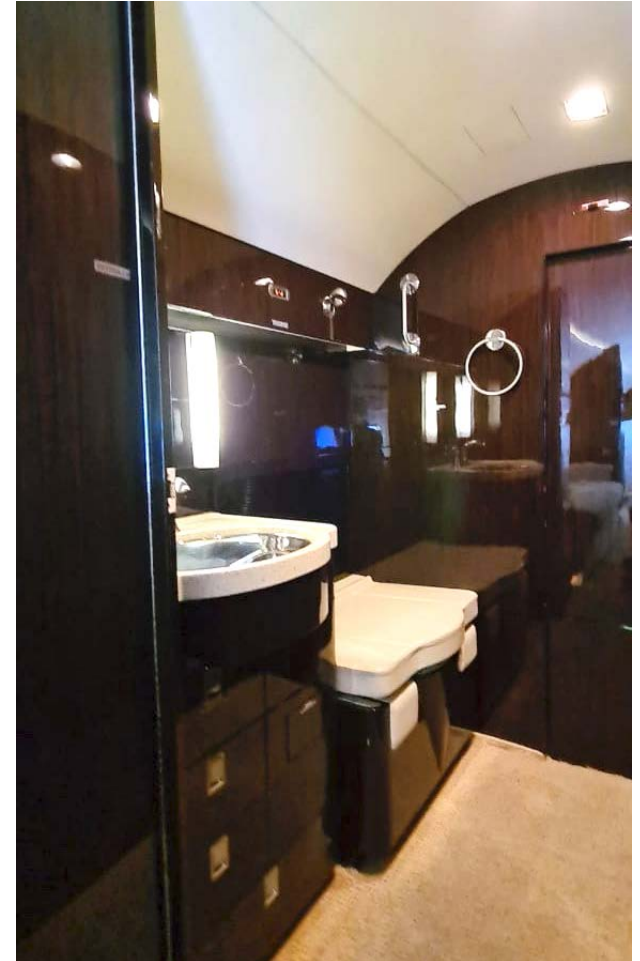
1997 Gulfstream GV S/N 533



1997 Gulfstream GV S/N 533



1997 Gulfstream GV S/N 533



1997 Gulfstream GV S/N 533





JETCRAFT

FOR YOUR WORLD

info@jetcraft.com | +1 919 941 8400 | jetcraft.com

JETCRAFT.COM | PRIVATE AND CONFIDENTIAL | © JETCRAFT 2023