

2019 Bombardier Global 6000

S/N 9864



JETCRAFT 

FOR YOUR WORLD

3,921
Hours

1,551
Landings



Highlights

- Premier Cabin – 6500 Interior
- Last Built Global 6000
- Engines on Rolls-Royce CorporateCare Enhanced
- APU Enrolled on Honeywell MSP
- Ka-Band Satellite Internet
- Pre-Purchase Inspection Completed by Bombardier June 2026
- 13 Passenger Configuration

Airframe

TOTAL TIME SINCE NEW	3,921 Hours (as of July 2026)
TOTAL LANDINGS SINCE NEW	1,551 Landings
ENTRY INTO SERVICE DATE	December 2019
CERTIFICATION	March 2019
MAINTENANCE TRACKING	CAMP
PROGRAM COVERAGE	Bombardier Smart Parts

Engines

	Left	Right
DESCRIPTION	Rolls Royce BR700-710A2-20	
SERIAL NUMBERS	22859	22858
TOTAL HOURS SINCE NEW	3,921 Hours	3,921 Hours
TOTAL CYCLES SINCE NEW	1,551 Cycles	1,551 Cycles
PROGRAM COVERAGE	Rolls-Royce CorporateCare Enhanced	

Avionics

The Bombardier Global 6000 is equipped with an integrated, Rockwell Collins Pro Line Fusion avionics suite

APU

DESCRIPTION	Honeywell RE220(GX)
SERIAL NUMBER	P-989
PROGRAM COVERAGE	Honeywell MSP
APU TOTAL TIME SINCE NEW	4,492 Hours

Connectivity and entertainment

DISPLAY MONITORS	Forward and Aft Cabin Bulkhead
CABIN MANAGEMENT SYSTEM	Collins Venue
INTERNET	Ka-Band and SwiftBroadband



Interior

NUMBER OF PASSENGERS	Thirteen (13)
GALLEY LOCATION	Forward
FORWARD CABIN CONFIGURATION	Four (4) Place Executive Club
MID CABIN CONFIGURATION	Four (4) Conference Group Opposite Credenza
AFT CABIN CONFIGURATION	Two (2) Place Divan (Forward Seat Not Certified for taxi Take-Off or Landing Opposite Three (3) Place Divan (When removeable mid/ aft cabin bulkhead is removed)
LAVATORY LOCATIONS	Forward Crew and Aft Executive
CREW REST	Forward
JUMP SEAT	Yes
LAST REFURBISHED DATE	Last Refurbished Date Original Completion Bombardier Tucson - June 2026 Vinyl Flooring in Galley, Entry, and Forward and Aft Lav New Cabin Carpet Minor Woodwork Touch Ups

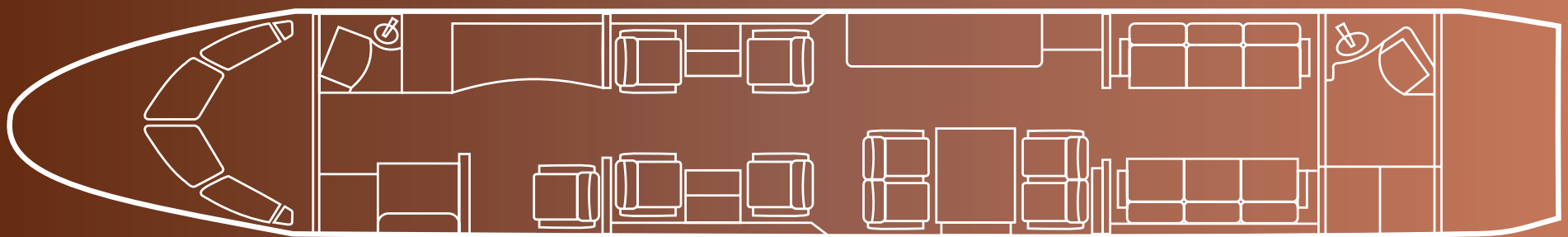
Exterior

BASE PAINT COLOR	White
STRIPE COLORS	Blue and Gray
LAST PAINT DATE	Original Completion

Major inspection status

Inspection	Last Performed	Next Due
15 Month	June 2026	September 2027
30 Month	November 2024	June 2027
60 Month	November 2024	December 2029
120 Month	-	December 2029

Floorplan



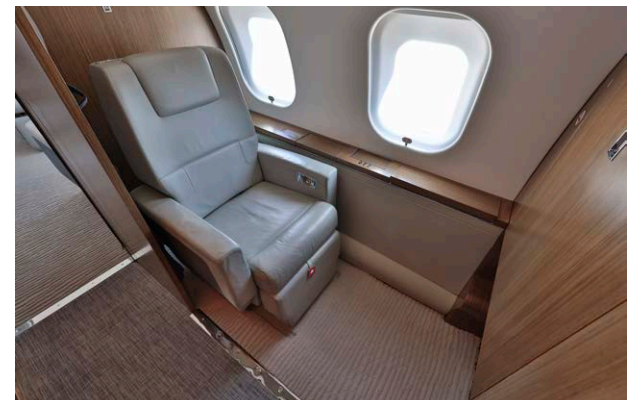
Specifications and/or descriptions are provided as introductory information only and do not constitute representations or warranties. Verification of specifications remain the sole responsibility of purchaser. Photographs and images may have been modified to remove logos, registration marks, or other identifying information to protect the privacy of the Aircraft's current owner. The Aircraft is subject to prior sale, lease, and/or removal from the market without prior notice.

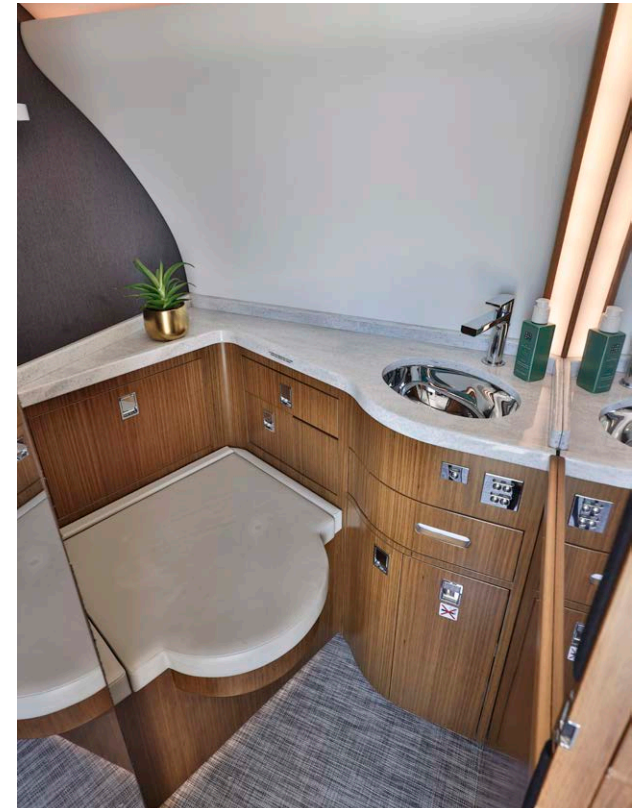




















JETCRAFT

FOR YOUR WORLD

info@jetcraft.com | +1 919 941 8400 | jetcraft.com

JETCRAFT.COM | PRIVATE AND CONFIDENTIAL | © JETCRAFT 2026