

2000 Gulfstream GIVSP

S/N 1398



JETCRAFT 

FOR YOUR WORLD

# 18,421

Hours

---

# 8,847

Landings

---



## Highlights

---

- Primus Elite - DU-885 Displays
- TCAS II w/ Change 7.1
- Avance L5 Internet
- Recent 96 Month Inspection
- 13 Passenger Configuration

2000 Gulfstream GIVSP S/N 1398

## Airframe

TOTAL TIME SINCE NEW	18,421 Hours (as of June 2026)
TOTAL LANDINGS SINCE NEW	8,847 Landings
ENTRY INTO SERVICE DATE	June 2000
CERTIFICATION	Part 135

## Engines

	Left	Right
DESCRIPTION	Rolls-Royce Derby PLC TAY611-8	
SERIAL NUMBERS	16900	16899
TOTAL HOURS SINCE NEW	17,686 Hours	17,702 Hours
TOTAL CYCLES SINCE NEW	8,476 Cycles	8,482 Cycles

## APU

DESCRIPTION	Honeywell 36-150
SERIAL NUMBER	P-538-C
APU TOTAL TIME SINCE NEW	9,187 Hours

## Notable features

DU-885 - PLANE DECK	TCAS 7i
LASEREF IV	Avance L5 Internet

2000 Gulfstream GIVSP S/N 1398

## Interior

NUMBER OF PASSENGERS	Thirteen (13)
GALLEY LOCATION	Aft
FWD CABIN CONFIGURATION	Four (4) Place Club
MID CABIN CONFIGURATION	Two (2) Place Club opposite a Three (3) Place Divan
AFT CABIN CONFIGURATION	Four (4) Place Conference Group opposite a Credenza
LAVATORY LOCATION	Aft
JUMPSEAT	Yes
LAST REFURBISHED DATE	2024

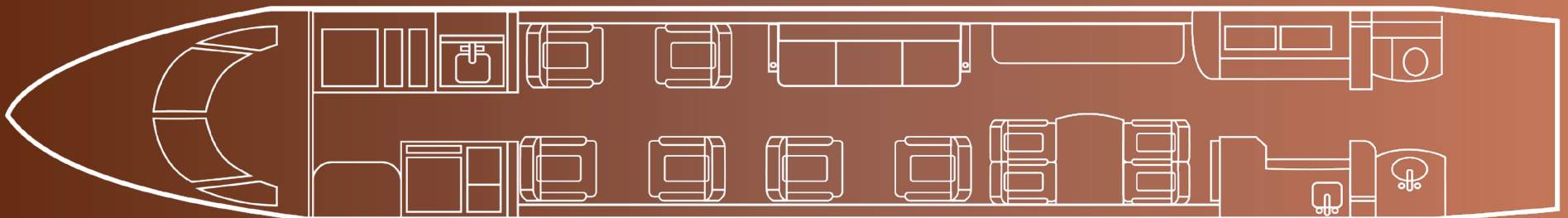
## Exterior

BASE PAINT COLOR	Grey
STRIPE COLOR	Red
LAST PAINTED DATE	2023

## Major inspection status

Inspection	Last Performed	Next Due
48 Month	-	September 2027
72 Month	-	October 2029
96 Month	July 2024	September 2031
144 Month	-	September 2027
Engine #1 Overhaul	January 2013	January 2033
Engine #1 Midlife	June 2021	June 2031
Engine #2 Overhaul	January 2013	January 2033
Engine #2 Midlife	June 2021	June 2031

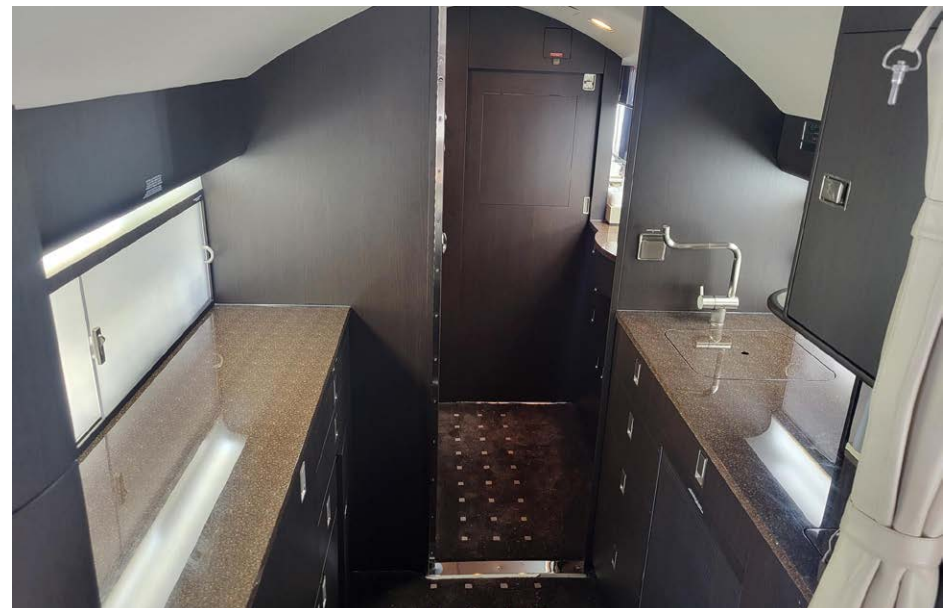
## Floorplan



2000 Gulfstream GIVSP S/N 1398



2000 Gulfstream GIVSP S/N 1398



2000 Gulfstream GIVSP S/N 1398



2000 Gulfstream GIVSP S/N 1398



**JETCRAFT** 

[info@jetcraft.com](mailto:info@jetcraft.com) | +1 919 941 8400 | [jetcraft.com](http://jetcraft.com)

Specifications and/or descriptions are provided as introductory information only and do not constitute representations or warranties. Verification of specifications remain the sole responsibility of purchaser. Photographs and images may have been modified to remove logos, registration marks, or other identifying information to protect the privacy of the Aircraft's current owner. The Aircraft is subject to prior sale, lease, and/or removal from the market without prior notice.



**JETCRAFT**

FOR YOUR WORLD

info@jetcraft.com | +1 919 941 8400 | jetcraft.com

JETCRAFT.COM | PRIVATE AND CONFIDENTIAL | © JETCRAFT 2024